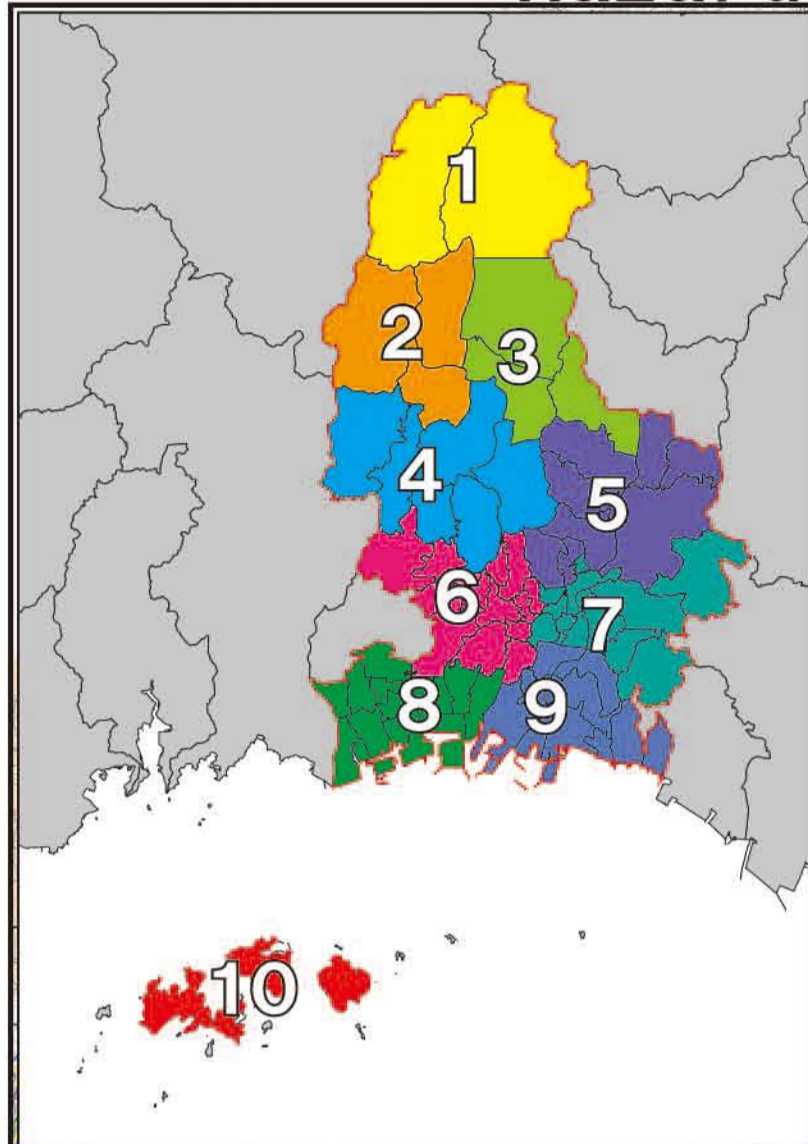


Permanent Edition Himeji City Flood/Landslide Disaster Hazard Map

Wide Area 9

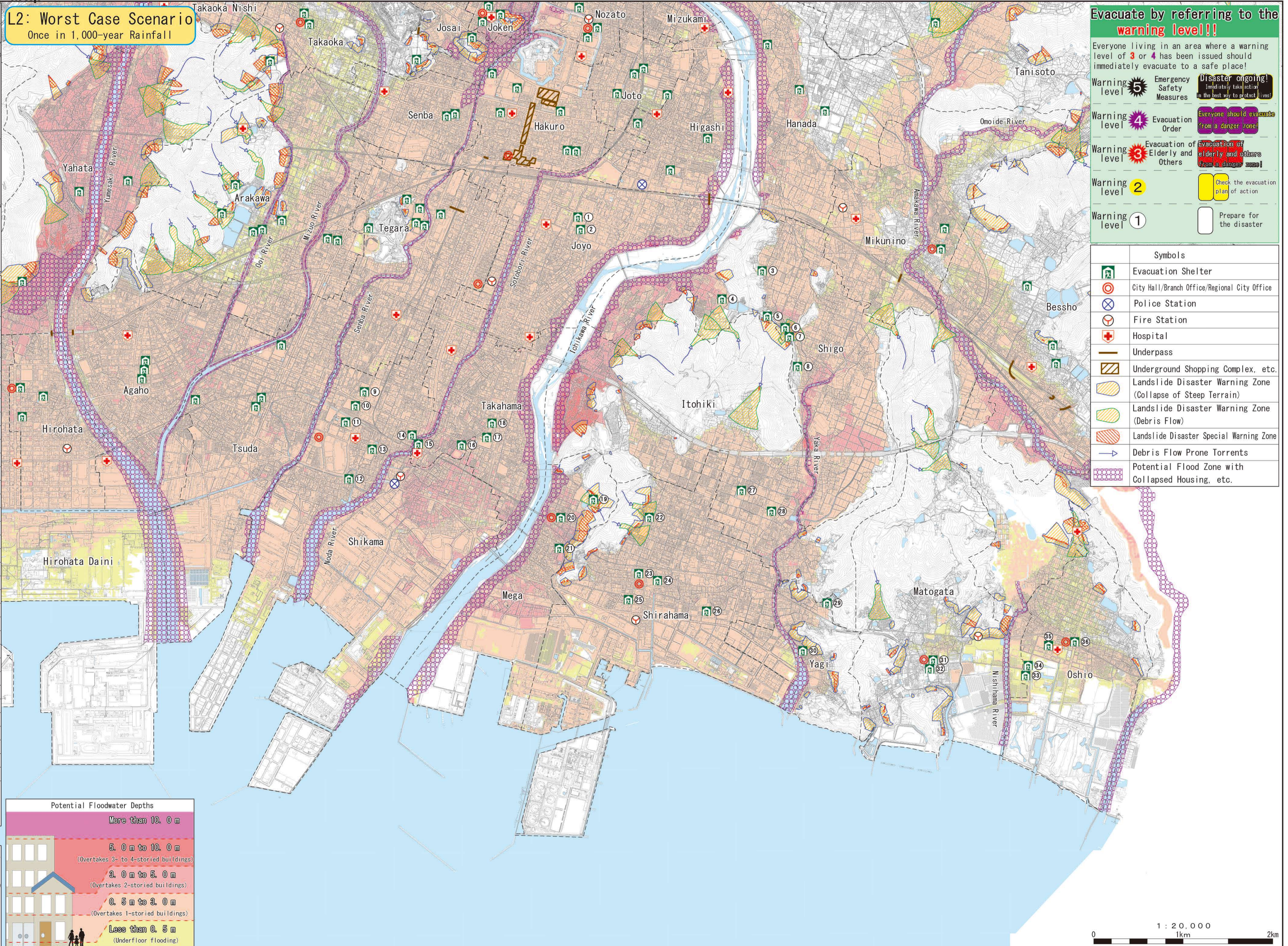
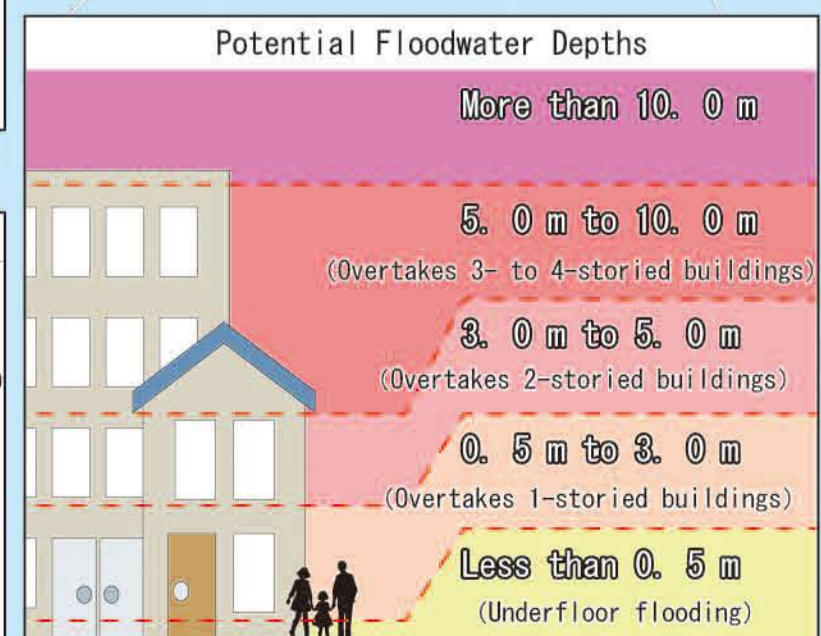
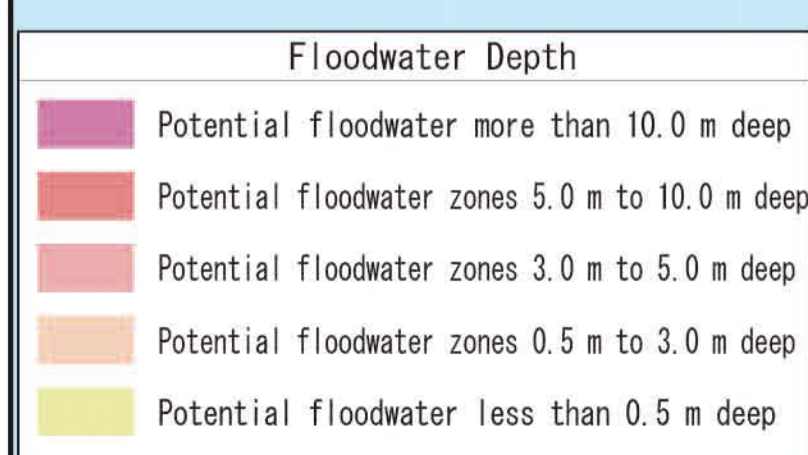
The Flood/Landslide Disaster Hazard Map anticipates damage caused by flooding and landside disasters and forecasts the scope of this damage on the map. This information includes potential flood zones as well as floodwater depths. The possible flood zones shown in this map forecast rivers overflowing with water due to the highest amount of rainfall thought possible in Hyogo Prefecture (L2: largest potential rainfall is equivalent to a 1,000-year rainfall). This information also includes the potential scope of housing collapse near rivers due to bank erosion and flood waters. Hyogo Prefecture surveyed potential landside disaster zones for this landslide disaster information according to the Act on Sediment Disaster Countermeasures for Sediment Disaster Prone Areas. This map shows areas designated as landslide disaster warning zones and landslide disaster special warning zone.



L2: Worst Case Scenario
Once in 1,000-year Rainfall

No.	Evacuation Shelter Name	L2	Land slide
1	Joyo Elementary School	△	○
2	Joyo Community Hall	△	○
3	Archaeological Research Center	△	○
4	Himeji Special Needs School Gymnasium	×	○
5	Shigo Academy (Late Term Course)	○	△
6	Shigo Community Hall	×	×
7	Shigo Academy (First Term Course)	×	×
8	Mino-no-Sato Kouryukan	○	○
9	Shikama Gymnasium	△	○
10	Shikama-Chubu Junior High School	△	○
11	Shikama Industrial High School	△	○
12	Shikama Community Hall	△	○
13	Shikama Elementary School	△	○
14	Shikama Citizen Center	×	○
15	Library Shikama Annex Hall	△	○
16	Shikama-Higashi Junior High School	△	○
17	Takahama Elementary School	△	○
18	Takahama Community Hall	△	○
19	Shikama High School	○	△ 3
20	Mega Community Hall	×	○
21	Mega Elementary School	△	○
22	Nada Junior High School	△	△
23	Shirahama Elementary School	△	○
24	Shirahama Community Hall	△	○
25	Shirahama Kindergarten	△	○
26	Nada Citizen Center	△	○
27	Itohiki Elementary School	△	○
28	Itohiki Community Hall	△	○
29	Yagi Elementary School	○	○
30	Yagi Community Hall	△	○
31	Matogata Community Hall	○	○
32	Matogata Elementary School	○	○
33	Omato Junior High School	○	○
34	Omato Citizen Center	△	○
35	Oshio Elementary School	△	○
36	Oshio Community Hall	△	○

○: Suitable for use X: Prohibited △: Partially suitable for use
 △ 3: Suitable for use on 3rd floor and above
 △ 体: Only gymnasium suitable for use
 △ 校: Only school buildings suitable for use
 ※: The evacuation shelters suitable for use vary according to the size of the potential disaster.



Evacuate by referring to the warning level!!

Everyone living in an area where a warning level of 3 or 4 has been issued should immediately evacuate to a safe place!

Warning level 5 Emergency Safety Measures **Disaster ongoing!** (Immediately take action in the best way to protect lives)

Warning level 4 Evacuation Order **Everyone should evacuate from a danger zone!**

Warning level 3 Evacuation of Elderly and Others **Evacuation of elderly and others from a danger zone!**

Warning level 2 Check the evacuation plan of action

Warning level 1 Prepare for the disaster

Symbols	
	Evacuation Shelter
	City Hall/Branch Office/Regional City Office
	Police Station
	Fire Station
	Hospital
	Underpass
	Underground Shopping Complex, etc.
	Landslide Disaster Warning Zone (Collapse of Steep Terrain)
	Landslide Disaster Warning Zone (Debris Flow)
	Landslide Disaster Special Warning Zone
	Debris Flow Prone Torrents
	Potential Flood Zone with Collapsed Housing, etc.

