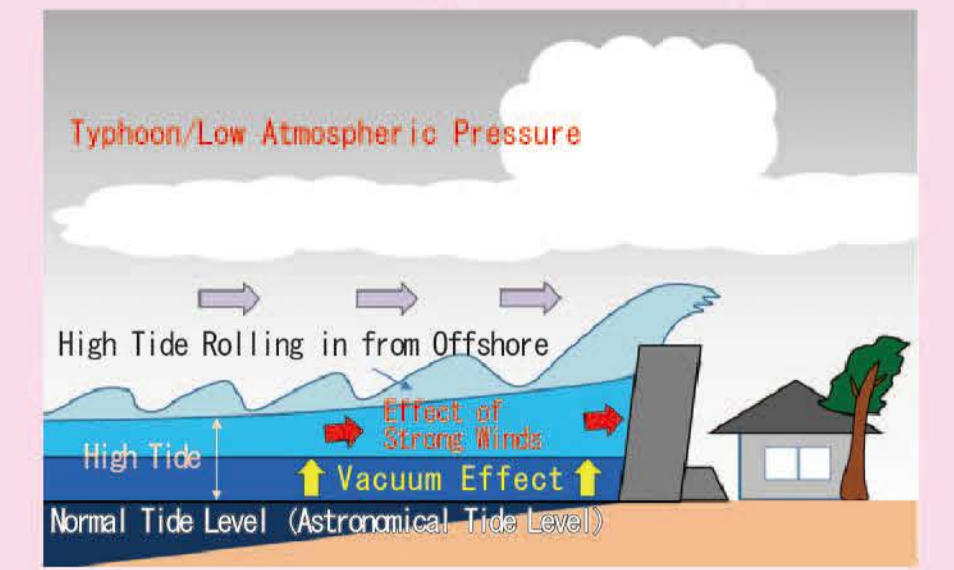


Permanent Edition Himeji City High Tide Hazard Map Western

The High Tide Hazard Map anticipates damage caused by the highest potential tide disaster and forecasts the scope of this damage on the map. The possible flood zones shown on this map anticipate flood water routes from the highest possible sea-level rise caused by the largest typhoons ever to come within range of Japan (central pressure of 910 hpa equivalent to the Muroto Typhoon with a forward speed of 73 km/h equivalent to the Isewan Typhoon). This map takes into account flooding not only along coastlines but also in rivers and is created anticipating a worst-case scenario where all embankments and other design measures fail. Please take note of the risks to your home and other surroundings before a disaster occurs to help you in the event of an evacuation.

What is a High Tide?

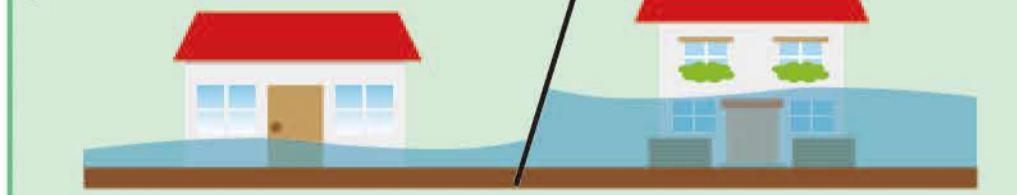
High tide is a phenomenon where the sea level rises abnormally due to a drop in air pressure caused by typhoons or the onset of low atmospheric pressure that pulls up the sea level, which is then blown by powerful winds up onto the coast.



Strong winds, powerful rain and ocean spray may make escape to evacuation shelters difficult as typhoons approach or the atmospheric pressure drops. Please take care to check high tides, torrential rains, storm reports, warnings and other weather information to escape safely to an evacuation shelter.

Evacuation in High Tide Disasters

First, check floodwater levels around your home and neighborhood. There is no way to ensure your safety if the floodwater level exceeds the first floor of single-storied home or building, or if the floodwater level exceeds the second floor of a two-storied home or building. Please evacuate to a safe place (horizontal evacuation).



If you are able to ensure your safety at your home or building, you may take refuge there (vertical evacuation).

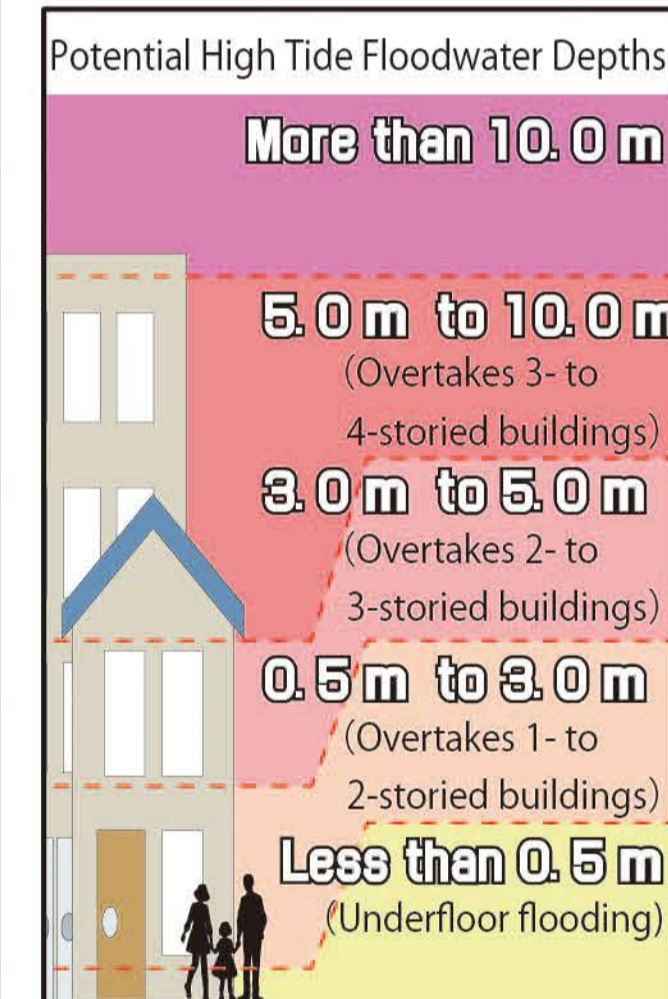
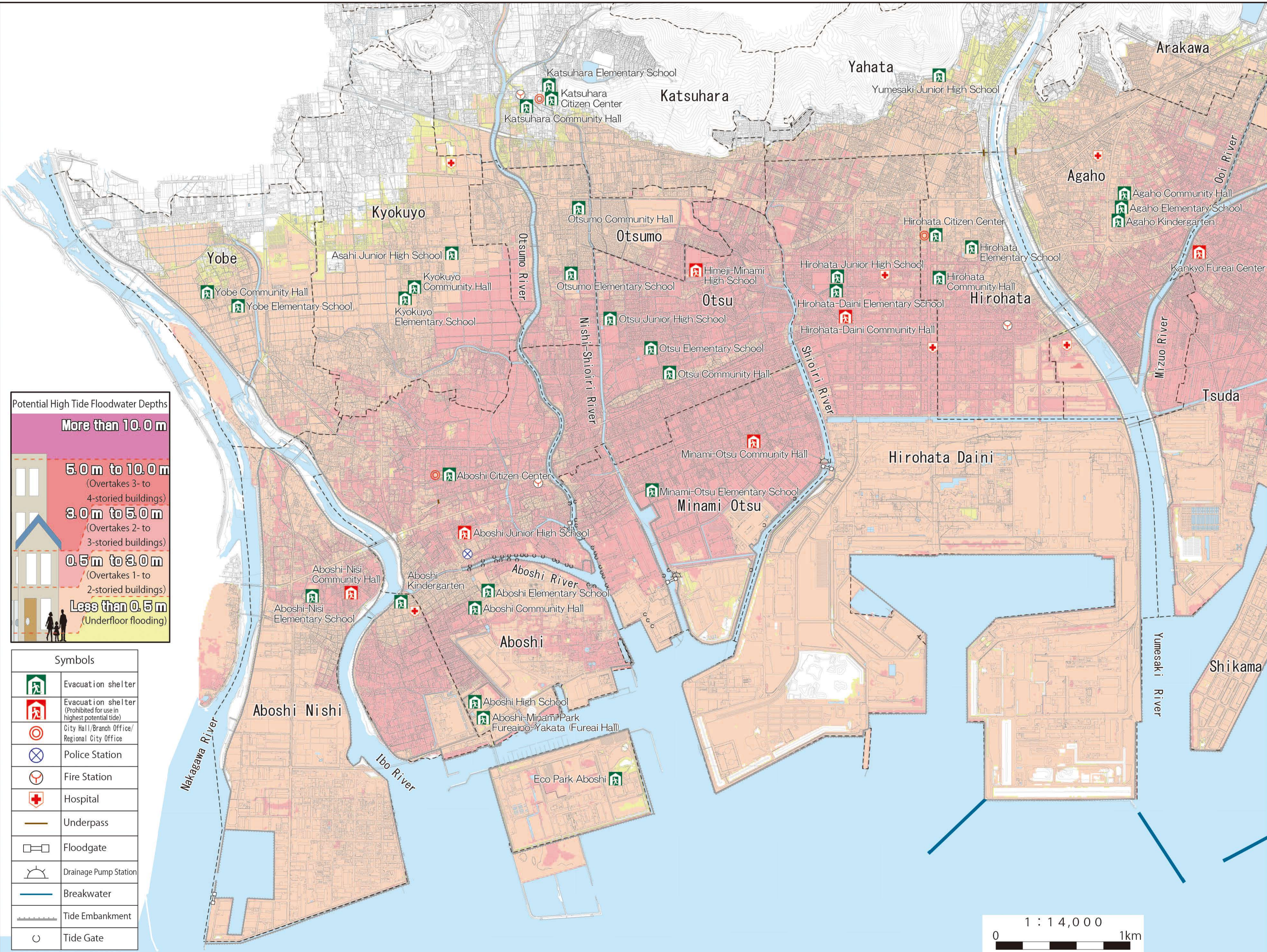
Please determine when to evacuate by referring to the warning level at the time of evacuation!! Everyone living in an area where a warning level of 3 or 4 has been issued should immediately evacuate to a safe place.

Warning level 5	Emergency Safety Measures	Disaster ongoing! Immediately take action in the best way to protect lives!
Warning level 4	Evacuation Order	Everyone should evacuate from a danger zone!
Warning level 3	Evacuation of Elderly and Others	Elderly and others needing extra time should evacuate from danger zones!
Warning level 2		Check the evacuation plan of action
Warning level 1		Prepare for the disaster

However, pay close attention to the weather conditions because strong winds, torrential rain and other outdoor conditions may make evacuation difficult. Be proactive in starting your evacuation when it can be done safely. Please consider and take action in the best way to protect lives.

Sources of Information

Warning level Forecasts and Warnings	Himeji City Residents, etc.	Television/Radio
		Early Warning Email Notifications, etc. Himeji Bosai.net
		Disaster Prevention Radio System (Loud Speakers)
		Emergency Announcement Vehicles
		Twitter/Hyocom.jp Himeji Disaster Prevention Website



Symbols	
	Evacuation shelter
	Evacuation shelter (Prohibited for use in highest potential tide)
	City Hall/Branch Office/Regional City Office
	Police Station
	Fire Station
	Hospital
	Underpass
	Floodgate
	Drainage Pump Station
	Breakwater
	Tide Embankment
	Tide Gate

