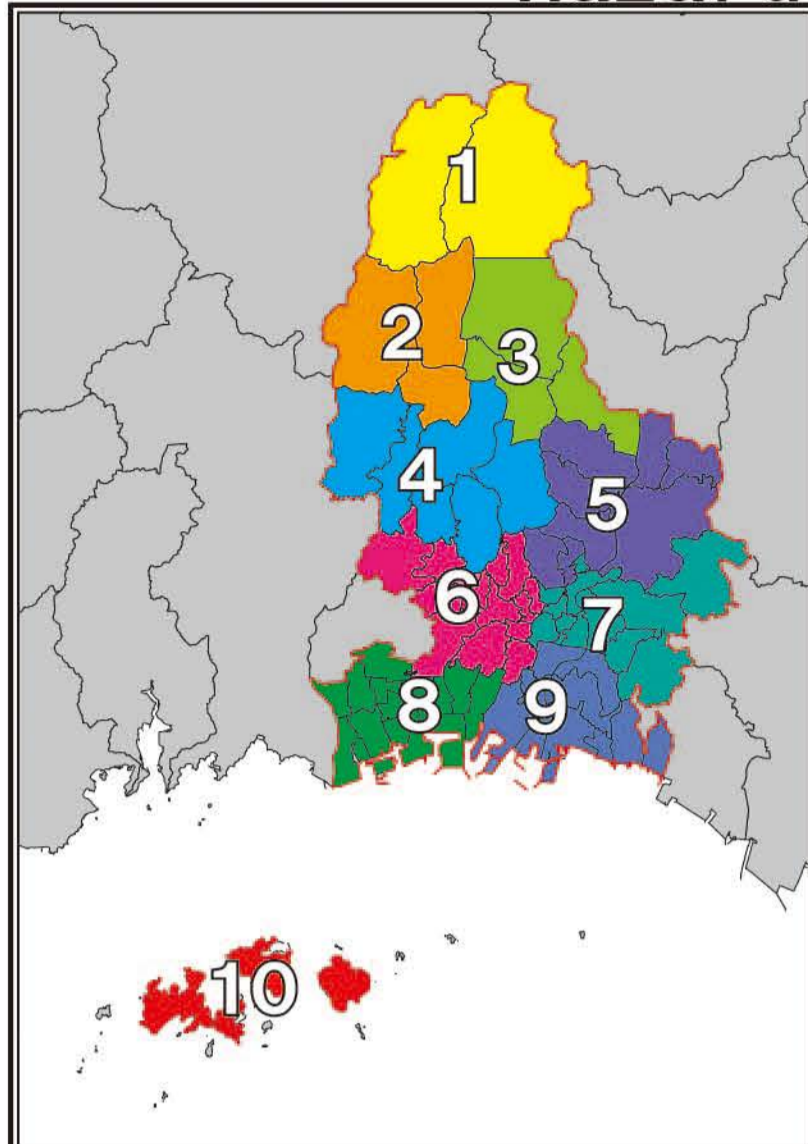


# Permanent Edition Himeji City Flood/Landslide Disaster Hazard Map Wide Area 4

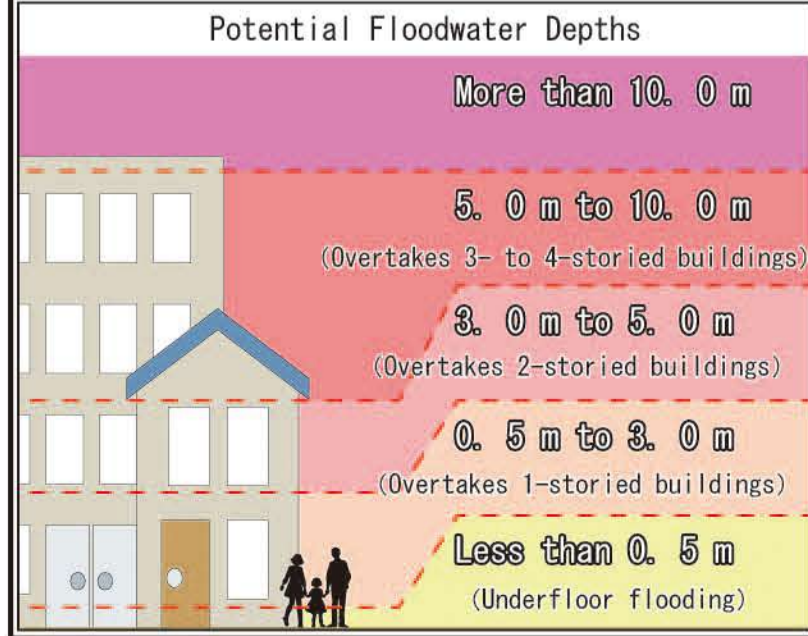
The Flood/Landslide Disaster Hazard Map anticipates damage caused by flooding and landside disasters and forecasts the scope of this damage on the map. This information includes potential flood zones as well as floodwater depths. The possible flood zones shown in this map forecast rivers overflowing with water due to the highest amount of rainfall thought possible in Hyogo Prefecture (L2: largest potential rainfall is equivalent to a 1,000-year rainfall). This information also includes the potential scope of housing collapse near rivers due to bank erosion and flood waters. Hyogo Prefecture surveyed potential landside disaster zones for this landslide disaster information according to the Act on Sediment Disaster Countermeasures for Sediment Disaster Prone Areas. This map shows areas designated as landslide disaster warning zones and landslide disaster special warning zone.



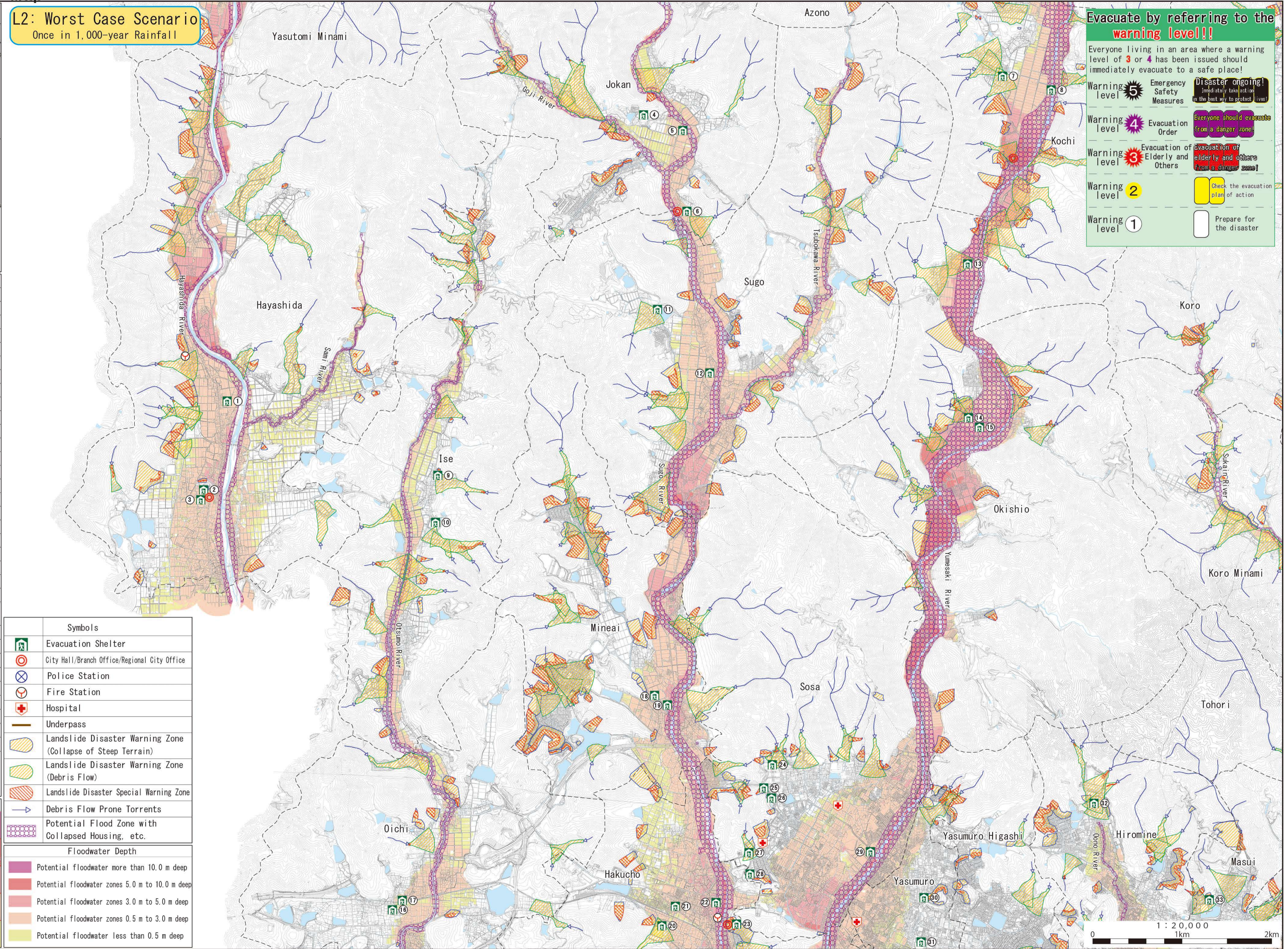
**L2: Worst Case Scenario**  
Once in 1,000-year Rainfall

No.	Evacuation Shelter Name	L2	Land slide
1	Hayashida Elementary School	△	○
2	Hayashida Junior High School	△	○
3	Hayashida Community Hall	△	○
4	Jokan Elementary School	○	○
5	Sugano Junior High School	△	○
6	Jokan Community Hall	△	○
7	Kochi Elementary School	○	△3
8	Kochi Community Hall	×	○
9	Ise Community Hall	×	×
10	Ise Elementary School	○	○
11	Sugo Community Hall	○	○
12	Sugo Elementary School	△	○
13	Okishio Junior High School	×	△3
14	Okishio Elementary School	×	△3
15	Okishio Community Hall	×	○
16	Oichi Elementary School	○	○
17	Oichi Community Hall	△	○
18	Mineai Elementary School	△	○
19	Mineai Community Hall	×	○
20	Himeji Shikisai High School	×	×
21	Hakucho Community Hall	△	○
22	Hakucho Elementary School	×	○
23	Nishi Citizen Center	×	×
24	Hyogo Prefectural University Himeji Engineering Campus	○	△体
25	Sosa Community Hall	×	×
26	Sosa Kindergarten	○	○
27	Shosha Junior High School	×	×
28	Shosha Special Needs School Gymnasium	○	○
29	Sosa Elementary School	△	○
30	Yasumuro Community Hall	×	×
31	Yasumuro Elementary School	○	○
32	Himeji Dokkyo University	×	×
33	Masui Elementary School	○	△体

Symbols	
	Evacuation Shelter
	City Hall/Branch Office/Regional City Office
	Police Station
	Fire Station
	Hospital
	Underpass
	Landslide Disaster Warning Zone (Collapse of Steep Terrain)
	Landslide Disaster Warning Zone (Debris Flow)
	Landslide Disaster Special Warning Zone
	Debris Flow Prone Torrents
	Potential Flood Zone with Collapsed Housing, etc.



Floodwater Depth	
	Potential floodwater more than 10.0 m deep
	Potential floodwater zones 5.0 m to 10.0 m deep
	Potential floodwater zones 3.0 m to 5.0 m deep
	Potential floodwater zones 0.5 m to 3.0 m deep
	Potential floodwater less than 0.5 m deep



**Evacuate by referring to the warning level!!**

Everyone living in an area where a warning level of 3 or 4 has been issued should immediately evacuate to a safe place!

Warning level 5	Emergency Safety Measures	Disaster ongoing! (Immediately take action in the best way to protect lives!)
Warning level 4	Evacuation Order	Everyone should evacuate from a danger zone!
Warning level 3	Evacuation of Elderly and Others	Evacuation of elderly and others from a danger zone!
Warning level 2		Check the evacuation plan of action
Warning level 1		Prepare for the disaster