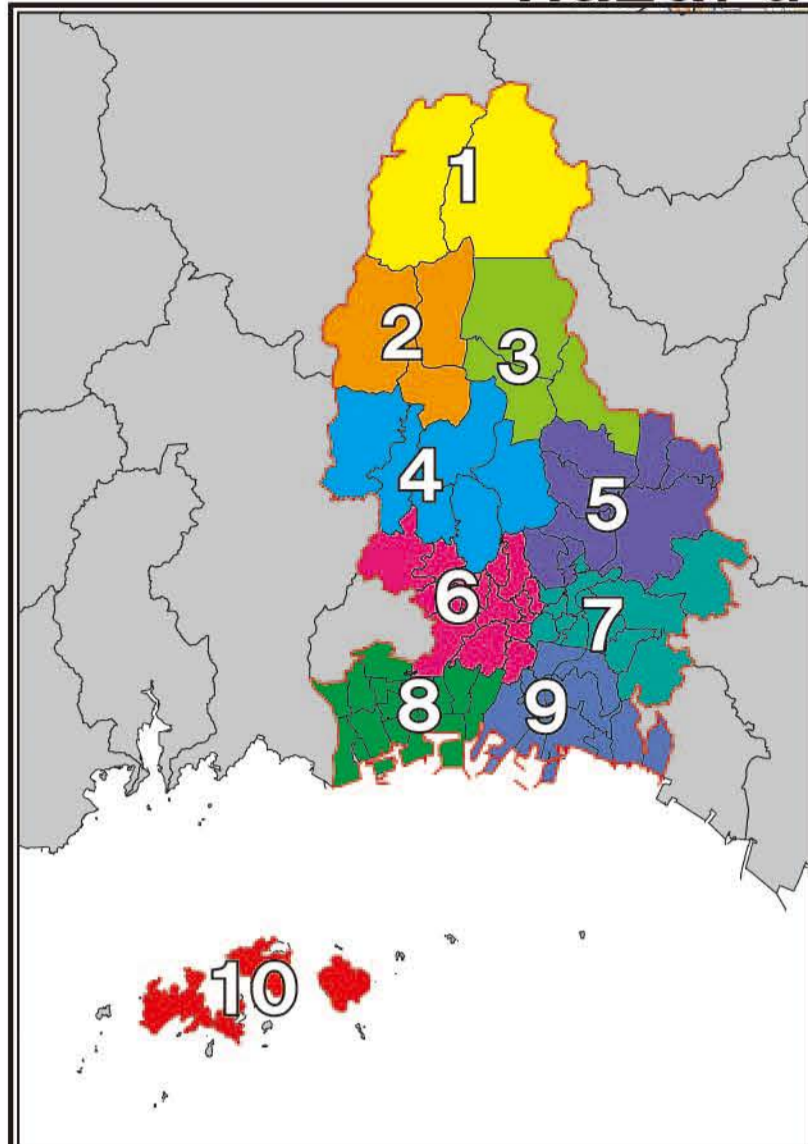


Permanent Edition Himeji City Flood/Landslide Disaster Hazard Map Wide Area 6

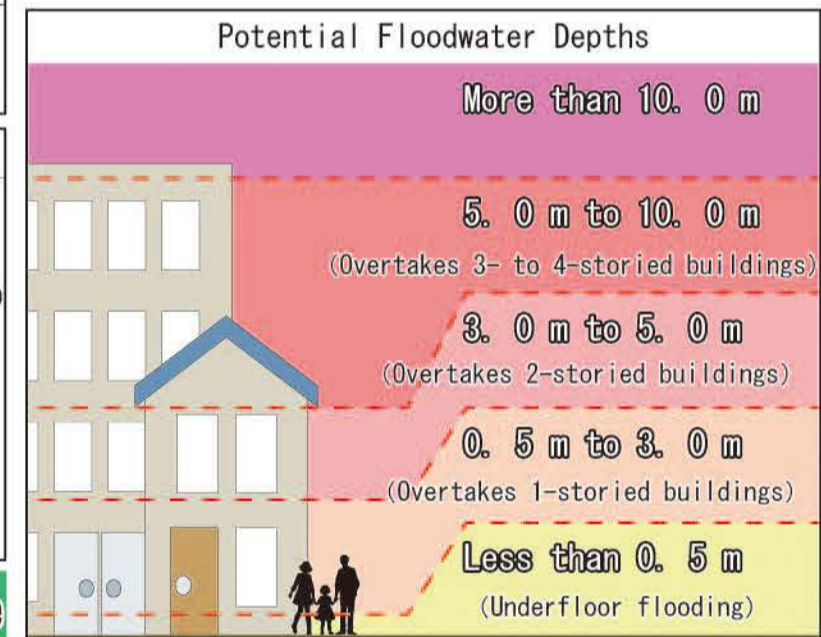
The Flood/Landslide Disaster Hazard Map anticipates damage caused by flooding and landslide disasters and forecasts the scope of this damage on the map. This information includes potential flood zones as well as floodwater depths. The possible flood zones shown in this map forecast rivers overflowing with water due to the highest amount of rainfall thought possible in Hyogo Prefecture (L2: largest potential rainfall is equivalent to a 1,000-year rainfall). This information also includes the potential scope of housing collapse near rivers due to bank erosion and flood waters. Hyogo Prefecture surveyed potential landslide disaster zones for this landslide disaster information according to the Act on Sediment Disaster Countermeasures for Sediment Disaster Prone Areas. This map shows areas designated as landslide disaster warning zones and landslide disaster special warning zone.



L2: Worst Case Scenario
Once in 1,000-year Rainfall

Symbols	
	Evacuation Shelter
	City Hall/Branch Office/Regional City Office
	Police Station
	Fire Station
	Hospital
	Underpass
	Underground Shopping Complex, etc.
	Landslide Disaster Warning Zone (Collapse of Steep Terrain)
	Landslide Disaster Warning Zone (Debris Flow)
	Landslide Disaster Special Warning Zone
	Debris Flow Prone Torrents
	Potential Flood Zone with Collapsed Housing, etc.

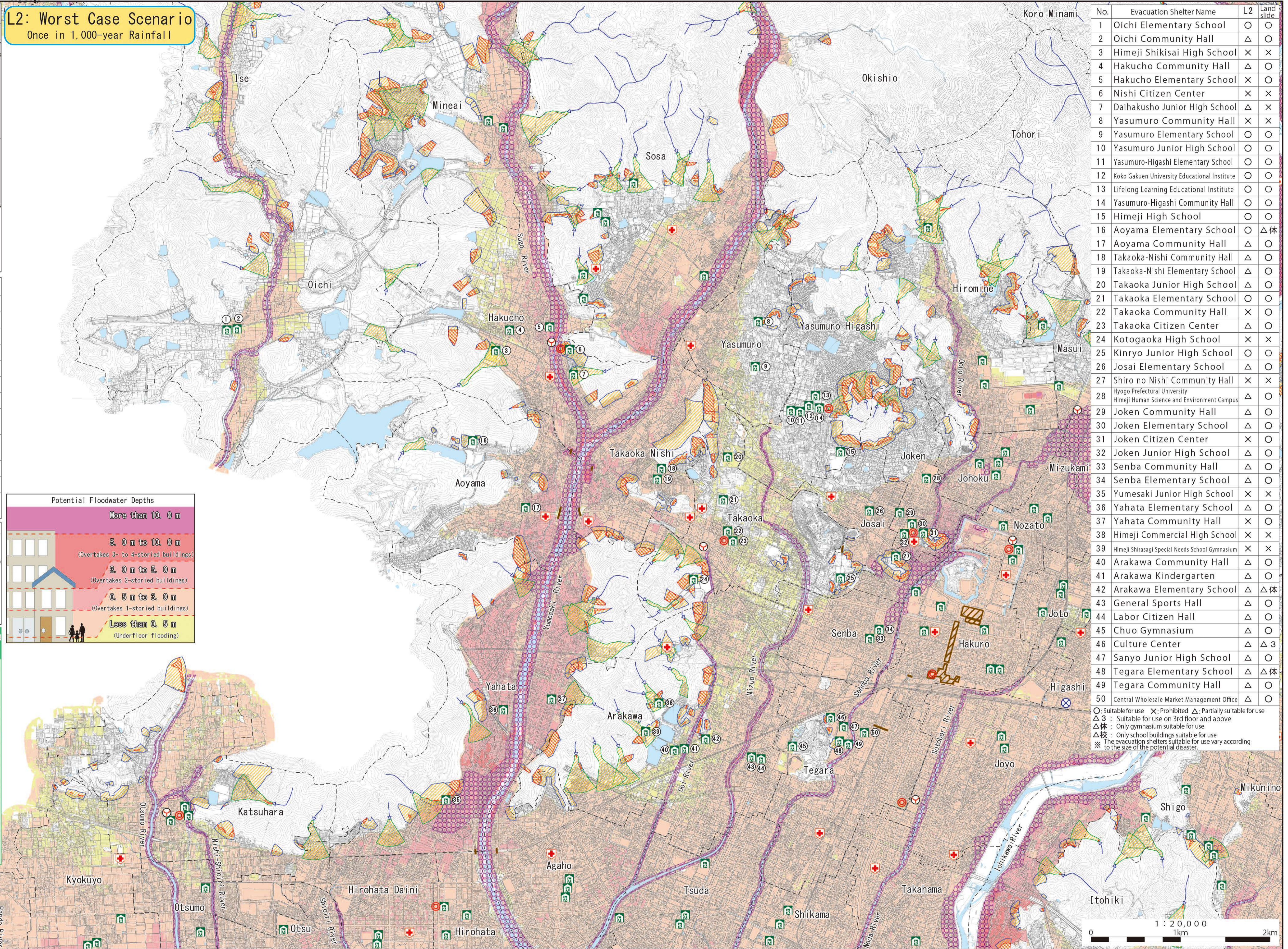
Floodwater Depth	
	Potential floodwater more than 10.0 m deep
	Potential floodwater zones 5.0 m to 10.0 m deep
	Potential floodwater zones 3.0 m to 5.0 m deep
	Potential floodwater zones 0.5 m to 3.0 m deep
	Potential floodwater less than 0.5 m deep



Evacuate by referring to the warning level!!

Everyone living in an area where a warning level of 3 or 4 has been issued should immediately evacuate to a safe place!

Warning level 5	Emergency Safety Measures	Disaster ongoing! Immediately take action in the best way to protect lives!
Warning level 4	Evacuation Order	Everyone should evacuate from a danger zone!
Warning level 3	Evacuation of Elderly and Others	Evacuation of elderly and others from a danger zone!
Warning level 2		Check the evacuation plan of action
Warning level 1		Prepare for the disaster



No.	Evacuation Shelter Name	L2	Land slide
1	Oichi Elementary School	○	○
2	Oichi Community Hall	△	○
3	Himeji Shikisai High School	×	×
4	Hakucho Community Hall	△	○
5	Hakucho Elementary School	×	○
6	Nishi Citizen Center	×	×
7	Daihakusho Junior High School	△	×
8	Yasumuro Community Hall	×	×
9	Yasumuro Elementary School	○	○
10	Yasumuro Junior High School	○	○
11	Yasumuro-Higashi Elementary School	○	○
12	Koko Gakuen University Educational Institute	○	○
13	Lifelong Learning Educational Institute	○	○
14	Yasumuro-Higashi Community Hall	○	○
15	Himeji High School	○	○
16	Aoyama Elementary School	○	△体
17	Aoyama Community Hall	△	○
18	Takaoka-Nishi Community Hall	△	○
19	Takaoka-Nishi Elementary School	△	○
20	Takaoka Junior High School	△	○
21	Takaoka Elementary School	○	○
22	Takaoka Community Hall	×	○
23	Takaoka Citizen Center	△	○
24	Kotogaoka High School	×	×
25	Kinryo Junior High School	○	○
26	Josai Elementary School	△	○
27	Shiro no Nishi Community Hall	×	×
28	Hyogo Prefectural University Himeji Human Science and Environment Campus	△	○
29	Joken Community Hall	△	○
30	Joken Elementary School	△	○
31	Joken Citizen Center	×	○
32	Joken Junior High School	△	○
33	Senba Community Hall	△	○
34	Senba Elementary School	△	○
35	Yumesaki Junior High School	×	×
36	Yahata Elementary School	△	○
37	Yahata Community Hall	×	○
38	Himeji Commercial High School	×	×
39	Himeji Shirasagi Special Needs School Gymnasium	×	×
40	Arakawa Community Hall	△	○
41	Arakawa Kindergarten	△	○
42	Arakawa Elementary School	△	△体
43	General Sports Hall	△	○
44	Labor Citizen Hall	△	○
45	Chuo Gymnasium	△	○
46	Culture Center	△	△3
47	Sanyo Junior High School	△	○
48	Tegara Elementary School	△	△体
49	Tegara Community Hall	△	○
50	Central Wholesale Market Management Office	△	○

○: Suitable for use X: Prohibited △: Partially suitable for use
 △3: Suitable for use on 3rd floor and above
 △体: Only gymnasium suitable for use
 △校: Only school buildings suitable for use
 ※: The evacuation shelters suitable for use vary according to the size of the potential disaster.

Scale: 1 : 20,000
0 1km 2km