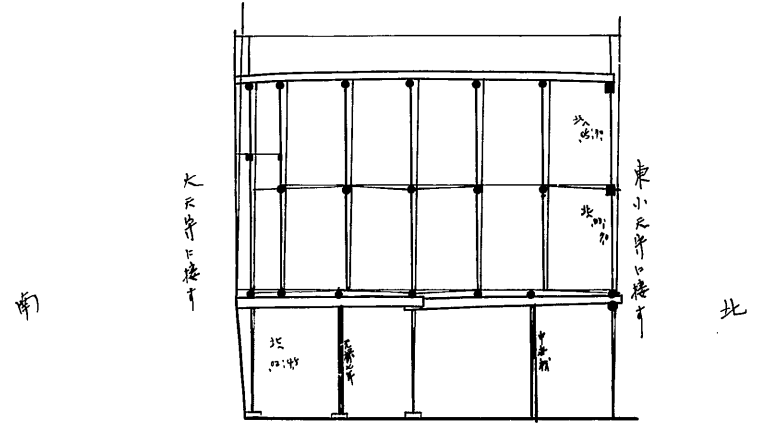
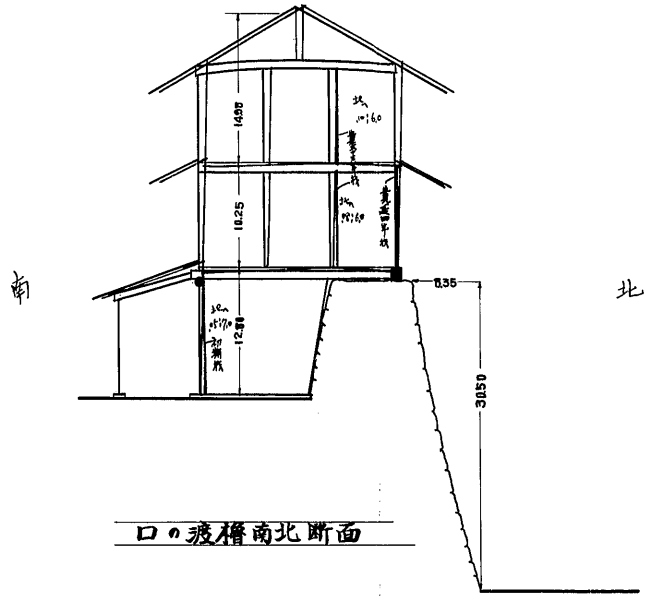


入口、八渡櫓軸部変形図
構造

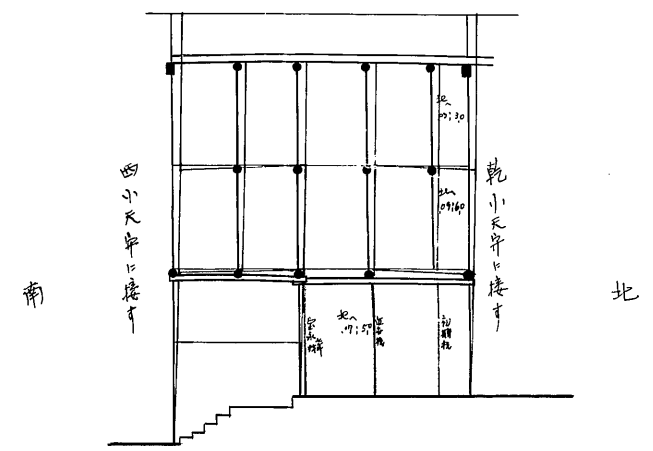
縮尺百分の一



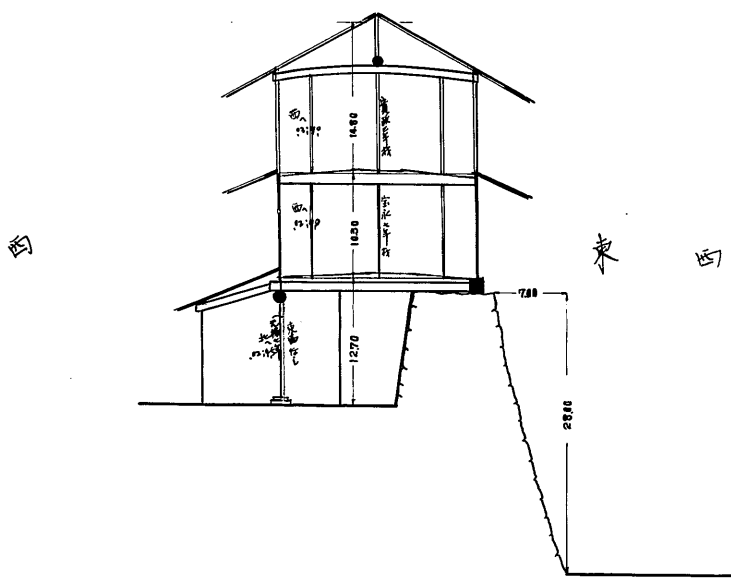
Ⅰの渡櫓南北断面



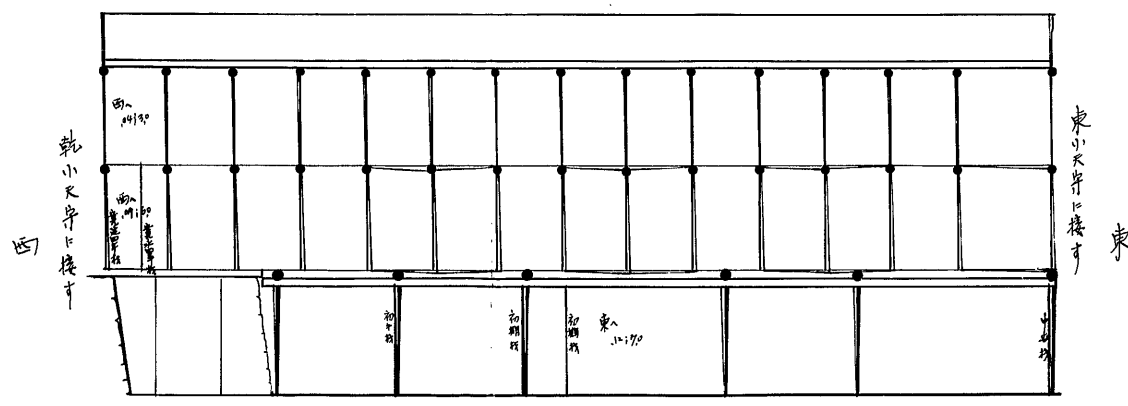
Ⅰの渡櫓南北断面



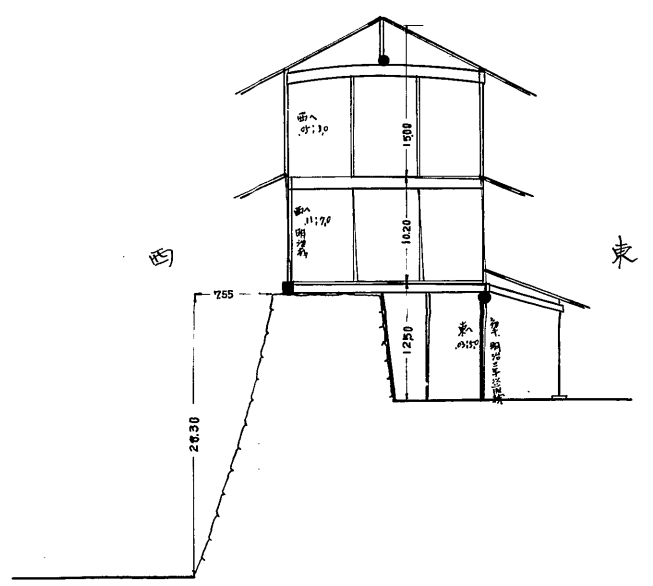
Ⅰの渡櫓南北断面



Ⅰの渡櫓東西断面



Ⅰの渡櫓東西断面



Ⅰの渡櫓東西断面

御印重根柱
補強柱