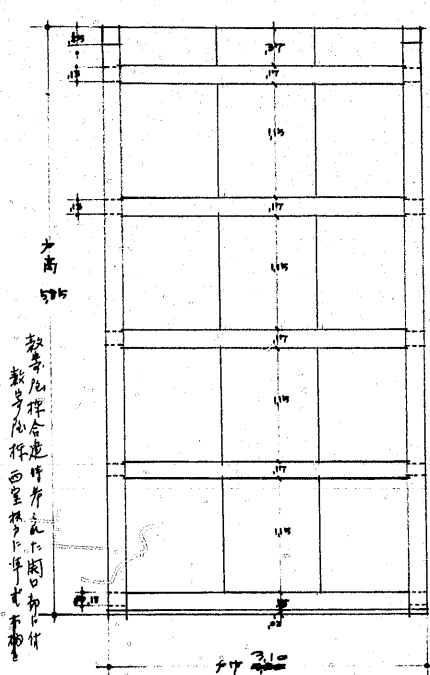
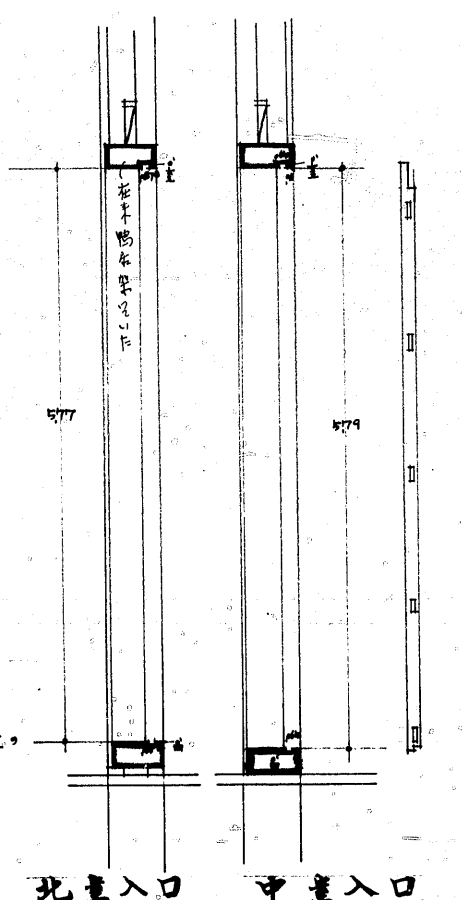


摺桱・中桱廻り詳細

材引		
桱	1.2	1.2
摺桱	1.2	1.2
中桱	1.2	1.2
板	1.2	1.2
手車釘		

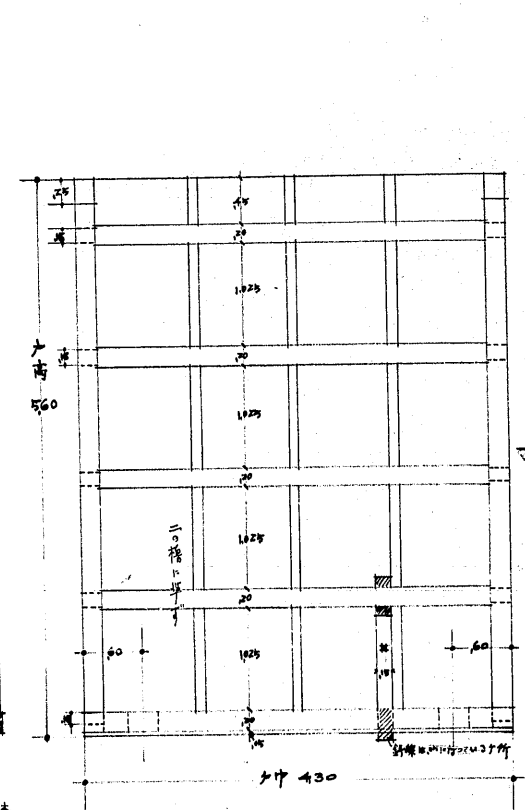


手高 575
板厚 25
釘長 100
釘間 50
釘径 12

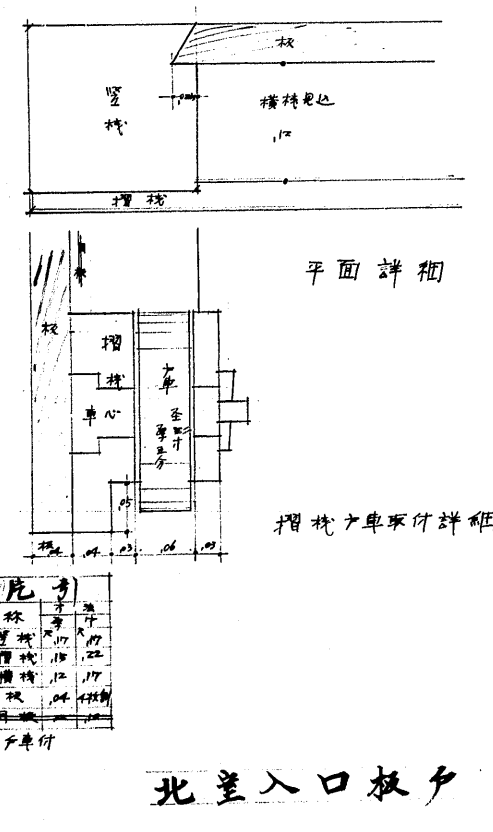
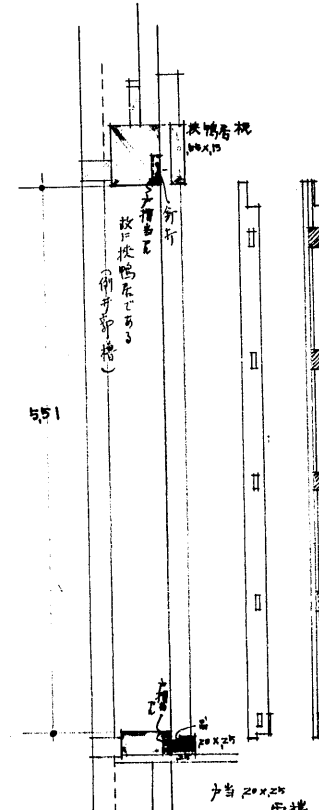


材引		
桱	1.2	1.2
摺桱	1.2	1.2
中桱	1.2	1.2
板	1.2	1.2
手車釘		

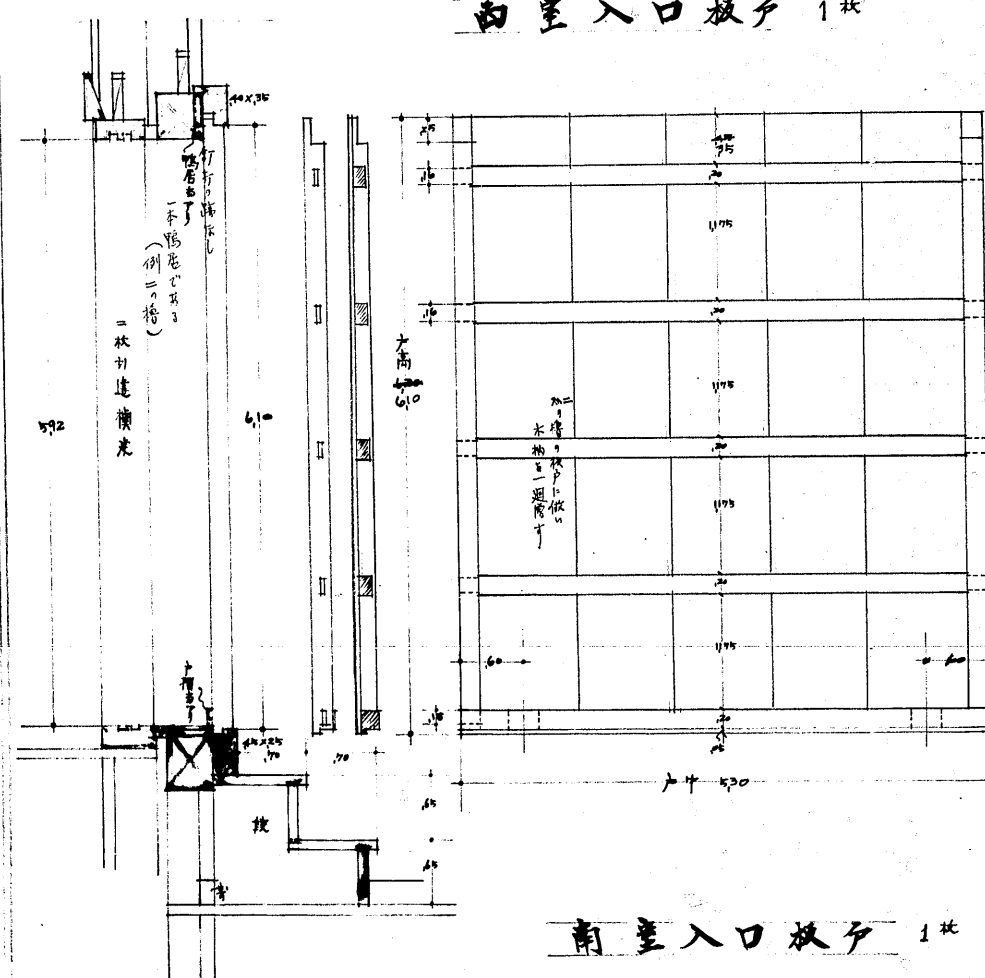
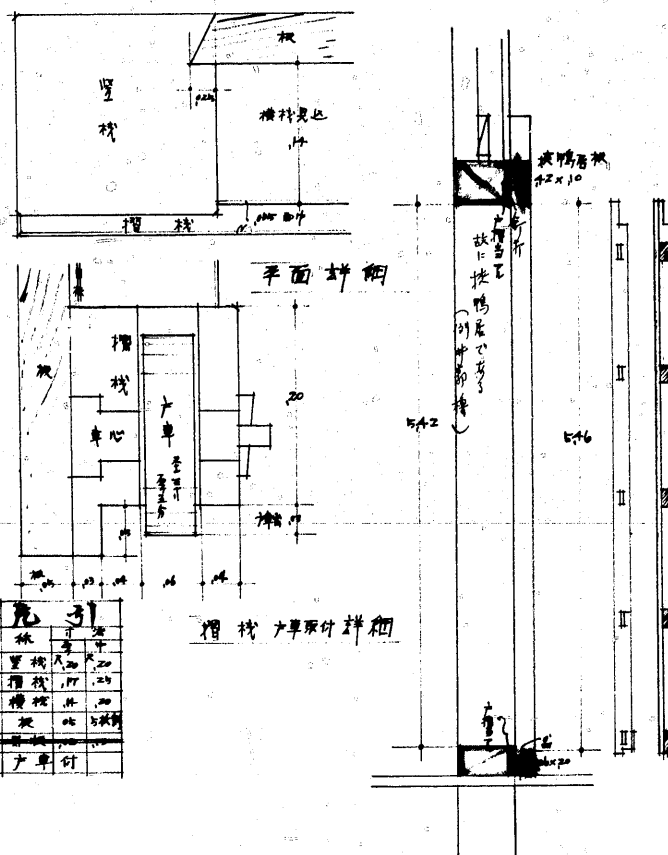
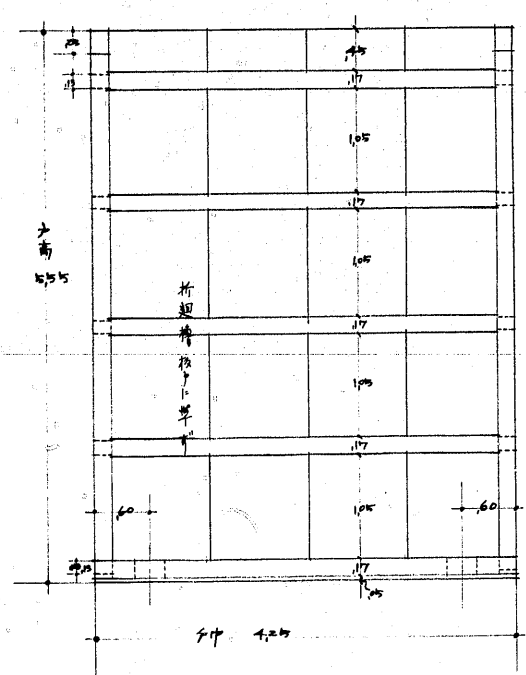
落桱詳細
尚摺桱詳細は
下図全新施工
こと。



西量入口板戸 1枚



材引		
桱	1.2	1.2
摺桱	1.2	1.2
中桱	1.2	1.2
板	1.2	1.2
手車釘		



南量入口板戸 1枚