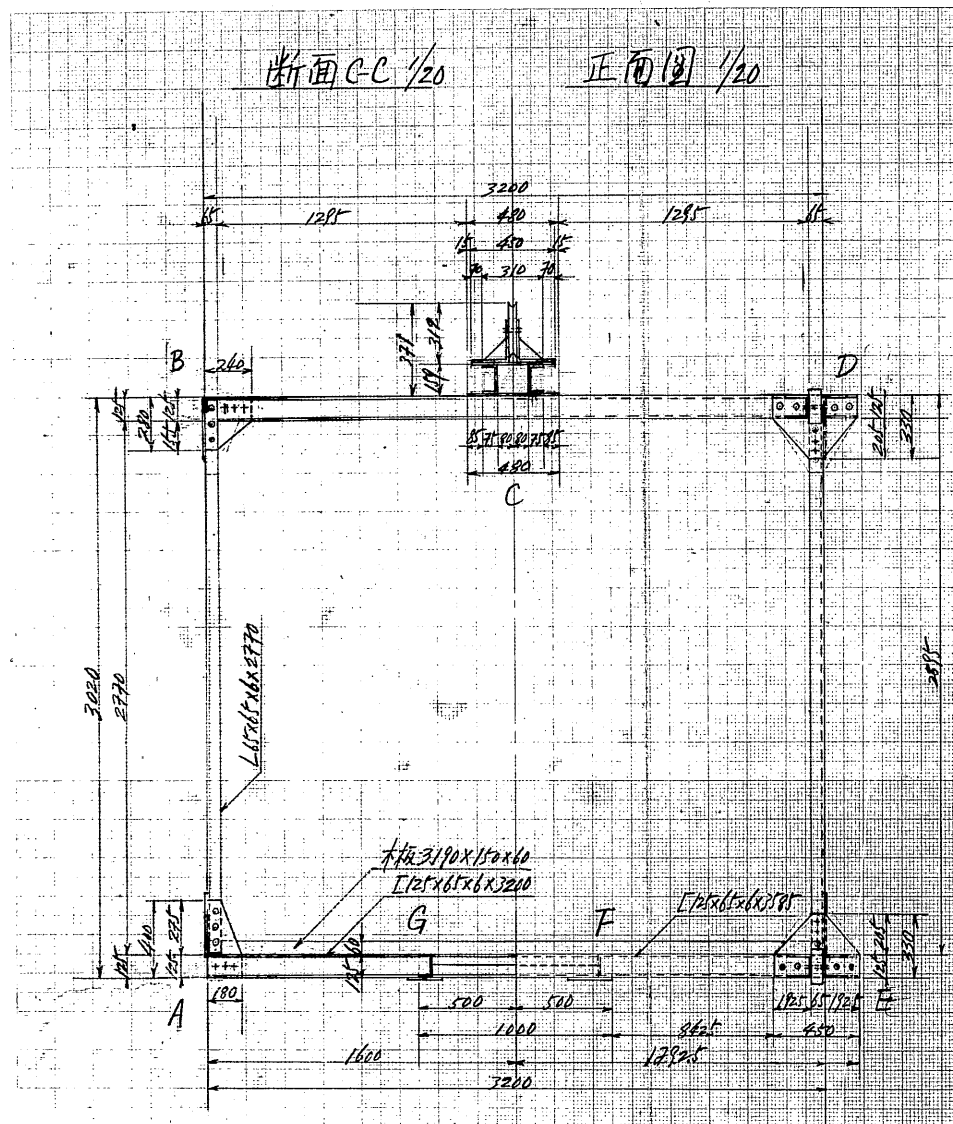
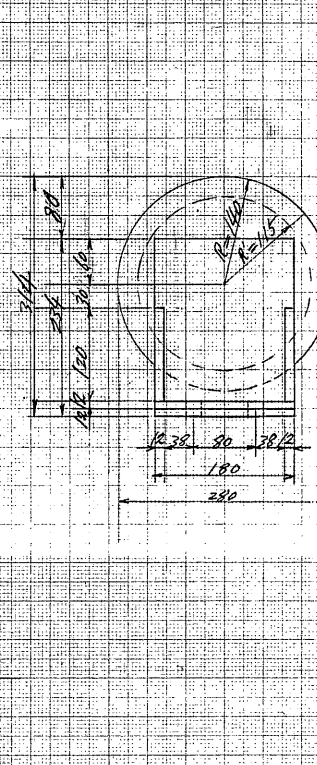
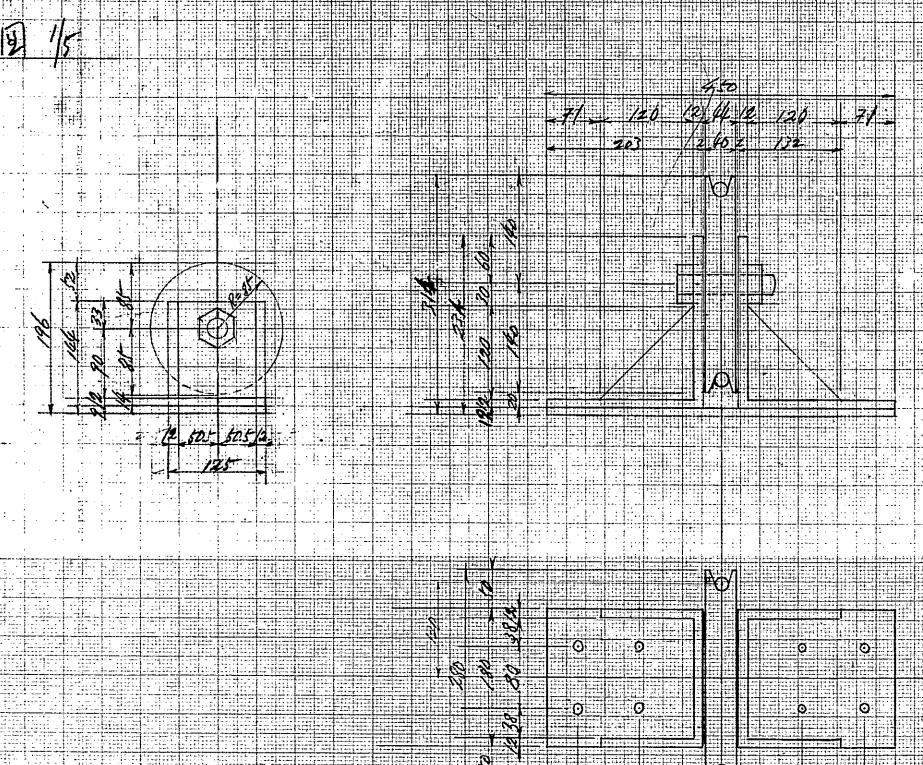
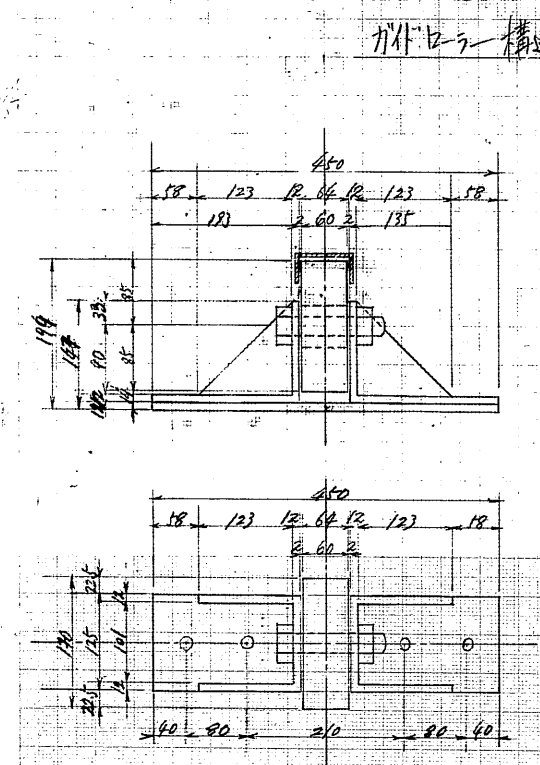


2550.00



材料名称	使用個数	形状寸法(mm)	重量(kg)		
			單位重	個重	全部重
圧鉄	1	PL180x180=009x12	9920	7.63	7.63
圧鉄	2	PL200x180=009x12	"	3.39	6.78
圧鉄	2	PL210x180=009x12	"	3.48	6.96
圧鉄	2	PL180x180=009x9	7065	0.99	1.98
圧鉄	1	φ280x40=0.024x16	7850.00	19.32	19.32
圧鉄	1	φ25x190	"	0.62	0.62
圧鉄	8	φ19x65	"	2.22	17.6
圧鉄	1	φ25	"	"	45.05
圧鉄	1	PL180x180=009x12	9920	5.18	5.18
圧鉄	2	PL180x180=009x12	"	2.26	4.52
圧鉄	2	PL180x180=009x12	"	1.41	2.82
圧鉄	2	PL120x120=009x9	7065	1.05	2.10
圧鉄	1	φ170x60=0.004	7850.00	10.67	10.67
圧鉄	1	φ25x190	"	0.70	0.70
圧鉄	4	φ19x65	"	0.22	0.88
圧鉄	1	φ25	"	"	26.84

材料名称	使用個数	形状寸法(mm)	重量(kg)		
			單位重	個重	全部重
AE	8	L15x65x6x1490	5.91	8.80	70.40
A.E.	8	L65x65x6x1460	"	8.62	68.96
B.D.	8	L65x65x6x1490	"	8.90	70.40
B.D.	8	L65x65x6x1460	"	8.62	68.96
AE	4	L65x65x6x2770	"	16.37	65.48
AE	8	PL650x330=0.148x6	47.10	6.97	55.76
AE	4	PL350x330=0.105x6	"	8.94	18.76
AE	4	PL350x330=0.115x6	"	5.41	21.64
AE	4	L65x65x6x2770	5.91	16.37	65.48
AE	8	PL620x330=0.204x6	47.10	11.30	90.40
AE	4	L65x65x6x2770	5.91	16.37	65.48
AE	8	PL620x330=0.204x6	47.10	11.30	90.40
AE	4	L65x65x6x2770	5.91	16.37	65.48
AE	4	PL620x330=0.204x6	47.10	11.30	90.40
AE	4	PL620x300=0.186x6	"	8.76	35.04
AE	2	L65x65x6x2770	5.91	16.37	32.74
AE	2	PL620x300=0.186x6	47.10	8.76	17.52
AE	2	PL620x330=0.204x6	"	11.30	22.60
AE	8	L65x65x6x3000	5.91	17.73	141.84
AE	8	L65x65x6x2770	"	17.35	140.40
AE	2	PL125x65x6x3585	13.40	48.03	96.06
AE	2	PL370x230=0.085x9	70.65	0.60	12.00
AE	2	PL350x180=0.065x9	"	8.45	8.90
AE	8	PL125x65x6x3200	13.40	42.88	347.04
AE	8x2=16	PL600x180=0.092x6	47.10	3.39	54.24
AE	8	PL600x230=0.158x6	70.65	8.74	77.92
AE	8	PL620x185=0.115x6	"	8.12	64.96
AE	8x2=16	PL125x65x6x1490	13.40	19.76	159.68
AE	8	L65x65x6x1520	5.91	8.98	71.84
AE	2	PL125x65x6x3585	13.40	48.03	96.06
AE	4	PL290x270=0.078x6	47.10	3.67	14.68
AE	2	PL480x150=0.072x9	70.65	5.08	10.16
AE	4	PL125x65x6x3000	13.40	42.88	171.52
AE	8	PL280x240=0.067x6	47.10	3.15	25.20
AE	8	PL460x260=0.119x9	70.65	8.40	67.20
AE	3	PL125x65x6x3200	13.40	42.88	128.64
AE	6	PL290x240=0.067x6	47.10	3.15	18.90
AE	3	PL480x230=0.110x9	70.65	7.77	23.31
AE	8	L65x65x6x1900	5.91	12.35	90.80
AE	8	L65x65x6x1920	"	"	90.80
AE	2x2=4	PL150x75x65x4000	18.60	74.40	297.60
AE	2	PL150x75x65x4580	"	85.18	170.36
AE	2x2=4	PL480x320=0.179x9	70.65	12.64	50.56
AE	4x2=8	PL125x65x6x1410	13.40	19.56	156.48



386 512 (10)(114) No.599-1

3706kg 3600.05 25.20 81.2