

総括の部

各部総取扱高及び1日平均取扱高

卸売業者（3社）

単位 数量：kg 金額：円

部 別	総 取 扱 高		1日平均取扱高		前年対比（1日平均）	
	数 量	金 額	数 量	金 額	数 量	金 額
青果部 計	28,977,450	8,165,660,877	115,910	32,662,644	97.5%	99.8%
野菜	22,866,211	5,109,759,563	91,465	20,439,038	97.7%	98.2%
果実	6,111,239	3,055,901,314	24,445	12,223,605	96.8%	102.5%
水産物部 計	19,282,564	16,390,093,446	77,130	65,560,374	88.8%	105.0%
生鮮水産物	5,691,783	5,755,846,571	22,767	23,023,386	86.8%	101.6%
鮮魚	4,946,630	4,810,299,453	19,787	19,241,198	84.3%	98.6%
貝類	638,439	715,005,104	2,554	2,860,020	109.1%	118.8%
淡水魚	106,714	230,542,014	427	922,168	101.6%	123.8%
冷凍水産物	4,911,364	3,910,189,338	19,645	15,640,757	81.7%	96.0%
冷凍魚	4,592,401	3,445,811,394	18,370	13,783,246	82.0%	97.1%
鯨肉	318,963	464,377,944	1,276	1,857,512	77.8%	88.1%
加工水産物	8,679,417	6,724,057,537	34,718	26,896,230	95.0%	114.6%
塩干・加工物	7,893,052	6,698,293,634	31,572	26,793,175	93.8%	114.7%
藻類	786,365	25,763,903	3,145	103,056	108.3%	98.1%
総 計	48,260,014	24,555,754,323	193,040	98,223,017	93.8%	103.2%

開場日数

250 日

年次別取扱数量及び金額

単位 上段:数量(kg) 下段:金額(円)

	人口(人)	青果	水産物	合計	対前年比
昭和32年	314,703	3,489,302	289,338	3,778,640	
		405,595,197	405,772,883	811,368,080	
昭和33年	319,295	19,029,633	3,727,750	22,757,383	602%
		529,560,501	408,652,280	938,212,781	116%
昭和34年	323,450	21,726,797	4,653,444	26,380,241	116%
		665,804,246	761,592,313	1,427,396,559	152%
昭和35年	331,902	26,997,172	11,989,692	38,986,864	148%
		848,821,352	1,464,378,949	2,313,200,301	162%
昭和36年	336,073	29,381,357	23,000,617	52,381,974	134%
		1,081,892,897	2,773,331,321	3,855,224,218	167%
昭和37年	344,718	31,935,487	34,351,163	66,286,650	127%
		1,442,719,847	3,791,458,296	5,234,178,143	136%
昭和38年	353,607	38,615,000	38,982,317	77,597,317	117%
		1,820,021,888	4,863,218,834	6,683,240,722	128%
昭和39年	362,667	45,576,274	38,975,284	84,551,558	109%
		2,218,011,993	5,152,438,966	7,370,450,959	110%
昭和40年	371,226	47,935,354	44,136,838	92,072,192	109%
		2,536,686,898	6,159,867,224	8,696,554,122	118%
昭和41年	369,622	50,857,507	48,857,646	99,715,153	108%
		2,888,090,268	7,410,915,519	10,299,005,787	118%
昭和42年	374,922	55,424,618	55,579,982	111,004,600	111%
		3,422,816,957	8,919,134,308	12,341,951,265	120%
昭和43年	388,595	62,225,631	58,389,253	120,614,884	109%
		3,731,048,062	10,500,606,671	14,231,654,733	115%
昭和44年	394,959	67,499,178	62,459,491	129,958,669	108%
		4,595,086,426	12,405,102,566	17,000,188,992	119%
昭和45年	405,512	70,866,444	65,804,552	136,670,996	105%
		6,240,071,587	15,366,034,541	21,606,106,128	127%
昭和46年	410,153	78,426,476	72,887,148	151,313,624	111%
		6,377,230,384	18,203,041,038	24,580,271,422	114%
昭和47年	415,612	82,192,420	74,933,500	157,125,920	104%
		6,817,765,241	20,475,134,705	27,292,899,946	111%
昭和48年	422,676	90,011,554	82,390,708	172,402,262	110%
		8,602,195,695	28,984,912,450	37,587,108,145	138%
昭和49年	428,162	85,447,642	67,162,440	152,610,082	89%
		10,571,436,455	28,445,767,101	39,017,203,556	104%
昭和50年	432,850	86,081,769	70,762,227	156,843,996	103%
		11,499,215,643	38,322,209,381	49,821,425,024	128%
昭和51年	437,520	87,789,676	79,195,267	166,984,943	106%
		12,909,881,066	41,651,937,508	54,561,818,574	110%
昭和52年	440,520	90,499,515	91,330,349	181,829,864	109%
		13,631,197,670	57,340,046,181	70,971,243,851	130%
昭和53年	443,227	91,948,762	83,713,900	175,662,662	97%
		14,163,637,611	53,023,158,058	67,186,795,669	95%
昭和54年	444,811	91,398,784	88,685,456	180,084,240	103%
		14,326,166,735	58,628,004,479	72,954,171,214	109%

年次別取扱数量及び金額

単位 上段:数量(kg) 下段:金額(円)

	人口(人)	青果	水産物	合計	対前年比
昭和55年	445,836	91,551,537	88,999,926	180,551,463	100%
		16,354,041,537	63,258,828,334	79,612,869,871	109%
昭和56年	446,703	90,475,228	86,281,717	176,756,945	98%
		17,548,301,442	57,278,279,302	74,826,580,744	94%
昭和57年	448,599	93,253,101	83,726,199	176,979,300	100%
		16,483,975,002	59,240,778,308	75,724,753,310	101%
昭和58年	450,271	92,262,934	86,155,038	178,417,972	101%
		17,395,187,073	55,901,907,281	73,297,094,354	97%
昭和59年	451,538	92,737,250	85,449,888	178,187,138	100%
		18,163,119,924	57,177,718,599	75,340,838,523	103%
昭和60年	452,523	89,329,829	86,248,853	175,578,682	99%
		18,170,744,794	55,846,673,682	74,017,418,476	98%
昭和61年	453,236	95,646,238	85,362,836	181,009,074	103%
		17,563,953,341	54,698,517,470	72,262,470,811	98%
昭和62年	453,999	95,177,300	90,731,339	185,908,639	103%
		17,325,548,090	56,478,229,056	73,803,777,146	102%
昭和63年	453,933	94,908,143	90,334,348	185,242,491	100%
		18,612,672,251	57,544,134,532	76,156,806,783	103%
平成元年	453,563	93,616,101	89,182,709	182,798,810	99%
		19,206,833,969	57,156,906,811	76,363,740,780	100%
平成2年	454,209	90,569,566	87,705,385	178,274,951	98%
		21,642,768,206	58,156,248,602	79,799,016,808	104%
平成3年	454,942	88,707,399	87,372,843	176,080,242	99%
		23,013,754,337	58,063,640,065	81,077,394,402	102%
平成4年	458,387	89,265,916	83,308,541	172,574,457	98%
		20,409,623,824	55,567,852,711	75,977,476,535	94%
平成5年	461,399	90,133,326	81,611,771	171,745,097	100%
		21,164,565,819	54,727,256,174	75,891,821,993	100%
平成6年	463,871	90,539,233	86,160,214	176,699,447	103%
		20,973,398,063	57,477,394,676	78,450,792,739	103%
平成7年	466,632	91,637,491	88,011,524	179,649,015	102%
		20,900,625,381	55,117,353,070	76,017,978,451	97%
平成8年	471,822	88,872,591	85,347,232	174,219,823	97%
		20,526,663,160	57,329,704,713	77,856,367,873	102%
平成9年	474,022	88,627,339	84,059,499	172,686,838	99%
		19,671,652,217	54,738,515,160	74,410,167,377	96%
平成10年	475,597	84,210,167	80,345,820	164,555,987	95%
		20,776,032,258	50,570,092,147	71,346,124,405	96%
平成11年	477,275	85,209,061	73,377,020	158,586,081	96%
		18,646,831,433	45,714,289,643	64,361,121,076	90%
平成12年	479,186	85,714,775	73,601,278	159,316,053	100%
		16,852,886,839	45,049,103,200	61,901,990,039	96%
平成13年	478,823	82,652,598	71,213,579	153,866,177	97%
		16,068,102,596	42,218,639,564	58,286,742,160	94%
平成14年	479,628	78,484,475	67,635,098	146,119,573	95%
		15,222,149,783	40,149,205,963	55,371,355,746	95%

年次別取扱数量及び金額

単位 上段:数量(kg) 下段:金額(円)

	人口(人)	青果	水産物	合計	対前年比
平成15年	480,498	76,207,162	63,047,104	139,254,266	95%
		15,191,207,858	36,213,983,890	51,405,191,748	93%
平成16年	480,894	74,402,249	62,026,297	136,428,546	98%
		15,453,406,931	36,265,965,426	51,719,372,357	101%
平成17年	481,020	71,763,853	57,719,171	129,483,024	95%
		13,915,474,259	35,673,570,850	49,589,045,109	96%
平成18年	482,680	64,916,354	54,252,904	119,169,258	92%
		13,902,006,333	34,998,659,830	48,900,666,163	99%
平成19年	536,255	56,398,504	52,151,251	108,549,755	91%
		12,169,143,506	31,526,852,734	43,695,996,240	89%
平成20年	536,170	54,783,841	46,332,284	101,116,125	93%
		11,939,402,895	28,769,129,726	40,708,532,621	93%
平成21年	536,533	53,025,155	37,205,742	90,230,897	89%
		11,089,579,794	23,625,460,868	34,715,040,662	85%
平成22年	536,382	49,461,096	35,241,488	84,702,584	94%
		11,771,227,442	22,848,145,597	34,619,373,039	100%
平成23年	536,290	47,700,563	34,375,518	82,076,081	97%
		10,803,928,682	21,537,903,561	32,341,832,243	93%
平成24年	536,248	44,050,168	31,667,886	75,718,054	92%
		9,952,586,028	20,676,210,637	30,628,796,665	95%
平成25年	536,323	45,448,894	31,773,859	77,222,753	102%
		10,160,831,929	20,420,262,325	30,581,094,254	100%
平成26年	535,573	46,394,379	31,722,744	78,117,123	101%
		10,195,498,835	21,153,470,637	31,348,969,472	103%
平成27年	534,665	43,346,320	34,356,999	77,703,319	99%
		10,589,631,608	22,507,920,480	33,097,552,088	106%
平成28年	535,614	40,334,752	33,324,427	73,659,179	95%
		10,390,210,290	21,983,776,554	32,373,986,844	98%
平成29年	534,117	40,094,909	30,973,974	71,068,883	96%
		9,732,830,742	21,345,556,502	31,078,387,244	96%
平成30年	532,605	38,042,800	27,453,618	65,496,418	92%
		9,708,088,271	18,843,614,746	28,551,703,017	92%
令和元年	530,099	36,247,140	27,264,300	63,511,440	97%
		8,534,374,383	17,349,233,464	25,883,607,847	91%
令和2年	528,244	34,190,639	25,050,543	59,241,182	93%
		8,547,468,799	15,523,117,855	24,070,586,654	93%
令和3年	526,792	32,025,854	23,974,723	56,000,577	95%
		8,174,153,592	15,174,931,243	23,349,084,835	97%
令和4年	524,374	30,204,056	22,053,399	52,257,455	93%
		8,313,110,308	15,857,793,934	24,170,904,242	104%
令和5年	521,799	28,977,450	19,282,564	48,260,014	92%
		8,165,660,877	16,390,093,446	24,555,754,323	102%

(注) ○ 人口は、1月1日現在(推計人口)

○ 青果、水産物は、兼業を含む。

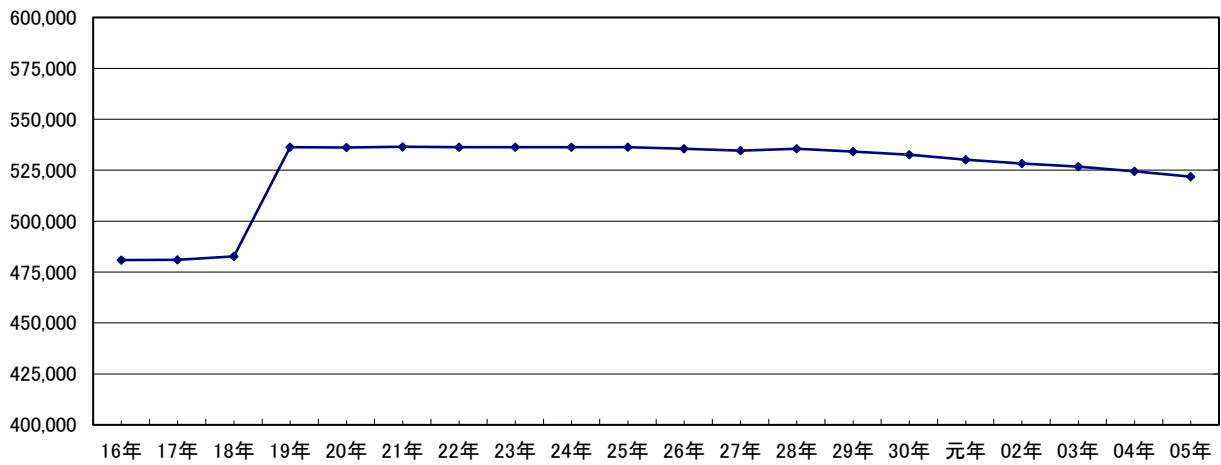
卸売業者各別取扱高

※ 兼業を含む

単位 上段：数量(kg) 下段：金額(円)

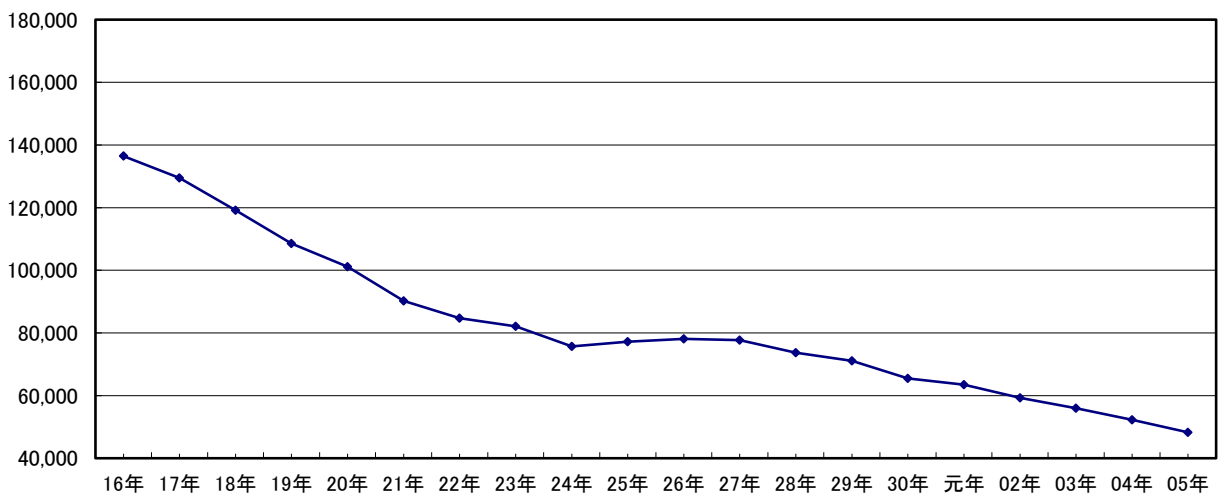
	合計	平均単価	1月	2月	3月	4月	5月	6月	7月	8月	9月	10月	11月	12月	
青果部計	28,977,450	¥282	2,591,286	2,447,230	2,501,010	2,442,152	2,307,451	2,199,104	1,981,037	2,152,718	2,393,890	2,440,405	2,581,591	2,939,577	
	8,165,660,877		721,658,656	687,275,490	684,707,778	691,094,786	628,012,019	604,306,946	604,668,927	691,537,091	662,993,695	698,041,306	622,628,340	868,735,843	
	22,866,211	¥223	2,004,402	1,965,835	2,066,060	2,065,610	1,968,777	1,729,983	1,548,740	1,680,165	2,006,563	1,906,343	1,935,283	1,988,452	
	5,109,759,563		430,945,651	414,757,849	415,179,900	476,084,263	463,039,942	399,536,326	374,832,604	383,109,270	451,312,347	474,880,230	404,666,386	421,414,795	
	6,111,239	¥500	586,884	481,395	434,950	376,542	338,674	469,121	432,297	472,553	387,327	534,062	646,308	951,125	
3,055,901,314	290,713,005		272,517,641	269,527,878	215,010,523	164,972,077	204,770,620	229,836,323	308,427,821	211,681,348	223,161,076	217,961,954	447,321,048		
水産物部計	19,282,564	¥850	1,778,751	1,375,077	1,648,752	1,429,853	1,638,094	1,888,061	1,699,373	1,417,759	1,617,941	1,418,286	1,536,394	1,834,223	
	16,390,093,446		1,093,803,653	1,061,524,729	1,354,431,008	987,004,933	1,214,202,157	1,777,106,664	1,507,317,655	1,192,497,596	1,448,127,445	1,386,871,970	1,474,155,544	1,893,050,092	
生鮮水産物	5,691,783	¥1,011	472,774	487,025	585,335	497,243	556,614	585,007	424,031	385,861	390,712	363,881	372,207	571,093	
	5,755,846,571		508,240,766	487,036,379	594,013,849	433,984,191	489,931,678	455,730,575	437,582,692	429,728,561	398,418,653	384,196,177	430,641,748	706,341,302	
	4,946,630	¥972	393,632	409,504	489,516	409,618	480,550	545,692	385,524	352,995	364,926	348,131	308,093	458,449	
	4,810,299,453		416,679,341	392,575,409	490,763,313	352,952,314	412,789,727	398,863,540	343,919,135	368,271,626	356,124,119	357,395,554	348,544,876	571,420,499	
	638,439	¥1,120	76,543	73,671	90,936	80,701	66,618	25,481	14,455	14,405	13,306	10,515	61,367	110,441	
	715,005,104		87,824,630	89,488,249	95,323,329	68,727,886	60,292,245	31,066,342	19,912,398	20,781,221	16,830,505	17,567,762	77,023,944	130,166,593	
	106,714	¥2,160	2,599	3,850	4,883	6,924	9,446	13,834	24,052	18,461	12,480	5,235	2,747	2,203	
	230,542,014		3,736,795	4,972,721	7,927,207	12,303,991	16,849,706	25,800,693	73,751,159	40,675,714	25,464,029	9,232,861	5,072,928	4,754,210	
	冷凍水産物	4,911,364	¥796	708,003	285,853	292,471	318,394	459,617	320,513	510,933	440,598	485,586	292,315	342,569	454,512
		3,910,189,338		261,717,981	250,806,425	251,568,603	261,321,686	368,842,713	253,723,229	423,715,006	325,589,649	398,739,743	256,233,772	322,328,011	535,602,520
4,592,401		¥750	671,587	249,515	253,223	291,828	438,252	302,107	489,692	419,034	462,398	269,819	314,866	430,080	
3,445,811,394			215,793,283	189,350,633	194,954,760	220,224,721	334,920,026	217,464,170	386,537,885	300,566,424	372,368,649	226,856,927	286,085,735	500,688,181	
318,963		¥1,456	36,416	36,338	39,248	26,566	21,365	18,406	21,241	21,564	23,188	22,496	27,703	24,432	
464,377,944			45,924,698	61,455,792	56,613,843	41,096,965	33,922,687	36,259,059	37,177,121	25,023,225	26,371,094	29,376,845	36,242,276	34,914,339	
加工水産物	8,679,417	¥775	597,974	602,199	770,946	614,216	621,863	982,541	764,409	591,300	741,643	762,090	821,618	808,618	
	6,724,057,537		323,844,906	323,681,925	508,848,556	291,699,056	355,427,766	1,067,652,860	646,019,957	437,179,386	650,969,049	746,442,021	721,185,785	651,106,270	
	7,893,052	¥849	546,775	546,653	701,765	534,079	549,947	913,923	696,274	522,601	680,225	702,970	753,069	744,771	
	6,698,293,634		321,859,012	320,940,503	506,029,646	288,872,498	353,172,298	1,065,637,420	643,838,943	435,109,533	649,256,803	744,918,596	719,395,630	649,262,752	
	786,365	¥33	51,199	55,546	69,181	80,137	71,916	68,618	68,135	68,699	61,418	59,120	68,549	63,847	
	25,763,903		1,985,894	2,741,422	2,818,910	2,826,558	2,255,468	2,015,440	2,181,014	2,069,853	1,712,246	1,523,425	1,790,155	1,843,518	
合計	48,260,014	¥509	4,370,037	3,822,307	4,149,762	3,872,005	3,945,545	4,087,165	3,680,410	3,570,477	4,011,831	3,858,691	4,117,985	4,773,800	
	24,555,754,323		1,815,462,309	1,748,800,219	2,039,138,786	1,678,099,719	1,842,214,176	2,381,413,610	2,111,986,582	1,884,034,687	2,111,121,140	2,084,913,276	2,096,783,884	2,761,785,935	

姫路市人口推移



卸売業者取扱数量推移

(t)



卸売業者取扱金額推移

(百万円)

