

総括の部

## 各部総取扱高及び1日平均取扱高

卸売業者（3社）

単位 数量：kg 金額：円

部 別	総 取 扱 高		1日平均取扱高		前年対比（1日平均）	
	数 量	金 額	数 量	金 額	数 量	金 額
青果部 計	30,204,056	8,313,110,308	118,914	32,728,781	94.3%	101.7%
野菜	23,787,886	5,285,435,154	93,653	20,808,800	95.0%	103.7%
果実	6,416,170	3,027,675,154	25,261	11,919,981	91.7%	98.5%
水産物部 計	22,053,399	15,857,793,934	86,824	62,432,260	92.0%	104.5%
生鮮水産物	6,662,067	5,758,589,268	26,229	22,671,611	85.4%	106.9%
鮮魚	5,960,970	4,957,682,586	23,468	19,518,435	84.1%	106.1%
貝類	594,369	611,682,207	2,340	2,408,198	100.1%	114.8%
淡水魚	106,728	189,224,475	420	744,978	90.0%	103.1%
冷凍水産物	6,105,088	4,139,598,783	24,036	16,297,633	109.4%	106.9%
冷凍魚	5,688,624	3,603,784,935	22,396	14,188,130	112.2%	113.1%
鯨肉	416,464	535,813,848	1,640	2,109,503	81.1%	78.0%
加工水産物	9,286,244	5,959,605,883	36,560	23,463,015	87.7%	100.7%
塩干・加工物	8,548,309	5,932,913,256	33,655	23,357,926	87.0%	100.8%
藻類	737,935	26,692,627	2,905	105,089	96.7%	94.3%
総 計	52,257,455	24,170,904,242	205,738	95,161,040	93.3%	103.5%

開場日数

254 日

# 年次別取扱数量及び金額

単位 上段:数量(kg) 下段:金額(円)

	人口(人)	青果	水産物	合計	対前年比
昭和32年	314,703	3,489,302	289,338	3,778,640	
		405,595,197	405,772,883	811,368,080	
昭和33年	319,295	19,029,633	3,727,750	22,757,383	602%
		529,560,501	408,652,280	938,212,781	116%
昭和34年	323,450	21,726,797	4,653,444	26,380,241	116%
		665,804,246	761,592,313	1,427,396,559	152%
昭和35年	331,902	26,997,172	11,989,692	38,986,864	148%
		848,821,352	1,464,378,949	2,313,200,301	162%
昭和36年	336,073	29,381,357	23,000,617	52,381,974	134%
		1,081,892,897	2,773,331,321	3,855,224,218	167%
昭和37年	344,718	31,935,487	34,351,163	66,286,650	127%
		1,442,719,847	3,791,458,296	5,234,178,143	136%
昭和38年	353,607	38,615,000	38,982,317	77,597,317	117%
		1,820,021,888	4,863,218,834	6,683,240,722	128%
昭和39年	362,667	45,576,274	38,975,284	84,551,558	109%
		2,218,011,993	5,152,438,966	7,370,450,959	110%
昭和40年	371,226	47,935,354	44,136,838	92,072,192	109%
		2,536,686,898	6,159,867,224	8,696,554,122	118%
昭和41年	369,622	50,857,507	48,857,646	99,715,153	108%
		2,888,090,268	7,410,915,519	10,299,005,787	118%
昭和42年	374,922	55,424,618	55,579,982	111,004,600	111%
		3,422,816,957	8,919,134,308	12,341,951,265	120%
昭和43年	388,595	62,225,631	58,389,253	120,614,884	109%
		3,731,048,062	10,500,606,671	14,231,654,733	115%
昭和44年	394,959	67,499,178	62,459,491	129,958,669	108%
		4,595,086,426	12,405,102,566	17,000,188,992	119%
昭和45年	405,512	70,866,444	65,804,552	136,670,996	105%
		6,240,071,587	15,366,034,541	21,606,106,128	127%
昭和46年	410,153	78,426,476	72,887,148	151,313,624	111%
		6,377,230,384	18,203,041,038	24,580,271,422	114%
昭和47年	415,612	82,192,420	74,933,500	157,125,920	104%
		6,817,765,241	20,475,134,705	27,292,899,946	111%
昭和48年	422,676	90,011,554	82,390,708	172,402,262	110%
		8,602,195,695	28,984,912,450	37,587,108,145	138%
昭和49年	428,162	85,447,642	67,162,440	152,610,082	89%
		10,571,436,455	28,445,767,101	39,017,203,556	104%
昭和50年	432,850	86,081,769	70,762,227	156,843,996	103%
		11,499,215,643	38,322,209,381	49,821,425,024	128%
昭和51年	437,520	87,789,676	79,195,267	166,984,943	106%
		12,909,881,066	41,651,937,508	54,561,818,574	110%
昭和52年	440,520	90,499,515	91,330,349	181,829,864	109%
		13,631,197,670	57,340,046,181	70,971,243,851	130%
昭和53年	443,227	91,948,762	83,713,900	175,662,662	97%
		14,163,637,611	53,023,158,058	67,186,795,669	95%
昭和54年	444,811	91,398,784	88,685,456	180,084,240	103%
		14,326,166,735	58,628,004,479	72,954,171,214	109%

## 年次別取扱数量及び金額

単位 上段:数量(kg) 下段:金額(円)

	人口(人)	青果	水産物	合計	対前年比
昭和55年	445,836	91,551,537	88,999,926	180,551,463	100%
		16,354,041,537	63,258,828,334	79,612,869,871	109%
昭和56年	446,703	90,475,228	86,281,717	176,756,945	98%
		17,548,301,442	57,278,279,302	74,826,580,744	94%
昭和57年	448,599	93,253,101	83,726,199	176,979,300	100%
		16,483,975,002	59,240,778,308	75,724,753,310	101%
昭和58年	450,271	92,262,934	86,155,038	178,417,972	101%
		17,395,187,073	55,901,907,281	73,297,094,354	97%
昭和59年	451,538	92,737,250	85,449,888	178,187,138	100%
		18,163,119,924	57,177,718,599	75,340,838,523	103%
昭和60年	452,523	89,329,829	86,248,853	175,578,682	99%
		18,170,744,794	55,846,673,682	74,017,418,476	98%
昭和61年	453,236	95,646,238	85,362,836	181,009,074	103%
		17,563,953,341	54,698,517,470	72,262,470,811	98%
昭和62年	453,999	95,177,300	90,731,339	185,908,639	103%
		17,325,548,090	56,478,229,056	73,803,777,146	102%
昭和63年	453,933	94,908,143	90,334,348	185,242,491	100%
		18,612,672,251	57,544,134,532	76,156,806,783	103%
平成元年	453,563	93,616,101	89,182,709	182,798,810	99%
		19,206,833,969	57,156,906,811	76,363,740,780	100%
平成2年	454,209	90,569,566	87,705,385	178,274,951	98%
		21,642,768,206	58,156,248,602	79,799,016,808	104%
平成3年	454,942	88,707,399	87,372,843	176,080,242	99%
		23,013,754,337	58,063,640,065	81,077,394,402	102%
平成4年	458,387	89,265,916	83,308,541	172,574,457	98%
		20,409,623,824	55,567,852,711	75,977,476,535	94%
平成5年	461,399	90,133,326	81,611,771	171,745,097	100%
		21,164,565,819	54,727,256,174	75,891,821,993	100%
平成6年	463,871	90,539,233	86,160,214	176,699,447	103%
		20,973,398,063	57,477,394,676	78,450,792,739	103%
平成7年	466,632	91,637,491	88,011,524	179,649,015	102%
		20,900,625,381	55,117,353,070	76,017,978,451	97%
平成8年	471,822	88,872,591	85,347,232	174,219,823	97%
		20,526,663,160	57,329,704,713	77,856,367,873	102%
平成9年	474,022	88,627,339	84,059,499	172,686,838	99%
		19,671,652,217	54,738,515,160	74,410,167,377	96%
平成10年	475,597	84,210,167	80,345,820	164,555,987	95%
		20,776,032,258	50,570,092,147	71,346,124,405	96%
平成11年	477,275	85,209,061	73,377,020	158,586,081	96%
		18,646,831,433	45,714,289,643	64,361,121,076	90%
平成12年	479,186	85,714,775	73,601,278	159,316,053	100%
		16,852,886,839	45,049,103,200	61,901,990,039	96%
平成13年	478,823	82,652,598	71,213,579	153,866,177	97%
		16,068,102,596	42,218,639,564	58,286,742,160	94%
平成14年	479,628	78,484,475	67,635,098	146,119,573	95%
		15,222,149,783	40,149,205,963	55,371,355,746	95%

## 年次別取扱数量及び金額

単位 上段:数量(kg) 下段:金額(円)

	人口(人)	青果	水産物	合計	対前年比
平成15年	480,498	76,207,162	63,047,104	139,254,266	95%
		15,191,207,858	36,213,983,890	51,405,191,748	93%
平成16年	480,894	74,402,249	62,026,297	136,428,546	98%
		15,453,406,931	36,265,965,426	51,719,372,357	101%
平成17年	481,020	71,763,853	57,719,171	129,483,024	95%
		13,915,474,259	35,673,570,850	49,589,045,109	96%
平成18年	482,680	64,916,354	54,252,904	119,169,258	92%
		13,902,006,333	34,998,659,830	48,900,666,163	99%
平成19年	536,255	56,398,504	52,151,251	108,549,755	91%
		12,169,143,506	31,526,852,734	43,695,996,240	89%
平成20年	536,170	54,783,841	46,332,284	101,116,125	93%
		11,939,402,895	28,769,129,726	40,708,532,621	93%
平成21年	536,533	53,025,155	37,205,742	90,230,897	89%
		11,089,579,794	23,625,460,868	34,715,040,662	85%
平成22年	536,382	49,461,096	35,241,488	84,702,584	94%
		11,771,227,442	22,848,145,597	34,619,373,039	100%
平成23年	536,290	47,700,563	34,375,518	82,076,081	97%
		10,803,928,682	21,537,903,561	32,341,832,243	93%
平成24年	536,248	44,050,168	31,667,886	75,718,054	92%
		9,952,586,028	20,676,210,637	30,628,796,665	95%
平成25年	536,323	45,448,894	31,773,859	77,222,753	102%
		10,160,831,929	20,420,262,325	30,581,094,254	100%
平成26年	535,573	46,394,379	31,722,744	78,117,123	101%
		10,195,498,835	21,153,470,637	31,348,969,472	103%
平成27年	534,665	43,346,320	34,356,999	77,703,319	99%
		10,589,631,608	22,507,920,480	33,097,552,088	106%
平成28年	535,614	40,334,752	33,324,427	73,659,179	95%
		10,390,210,290	21,983,776,554	32,373,986,844	98%
平成29年	534,117	40,094,909	30,973,974	71,068,883	96%
		9,732,830,742	21,345,556,502	31,078,387,244	96%
平成30年	532,605	38,042,800	27,453,618	65,496,418	92%
		9,708,088,271	18,843,614,746	28,551,703,017	92%
令和元年	530,099	36,247,140	27,264,300	63,511,440	97%
		8,534,374,383	17,349,233,464	25,883,607,847	91%
令和2年	528,244	34,190,639	25,050,543	59,241,182	93%
		8,547,468,799	15,523,117,855	24,070,586,654	93%
令和3年	526,792	32,025,854	23,974,723	56,000,577	95%
		8,174,153,592	15,174,931,243	23,349,084,835	97%
令和4年	524,374	30,204,056	22,053,399	52,257,455	93%
		8,313,110,308	15,857,793,934	24,170,904,242	104%

(注) ○ 人口は、1月1日現在(推計人口)

○ 青果、水産物は、兼業を含む。

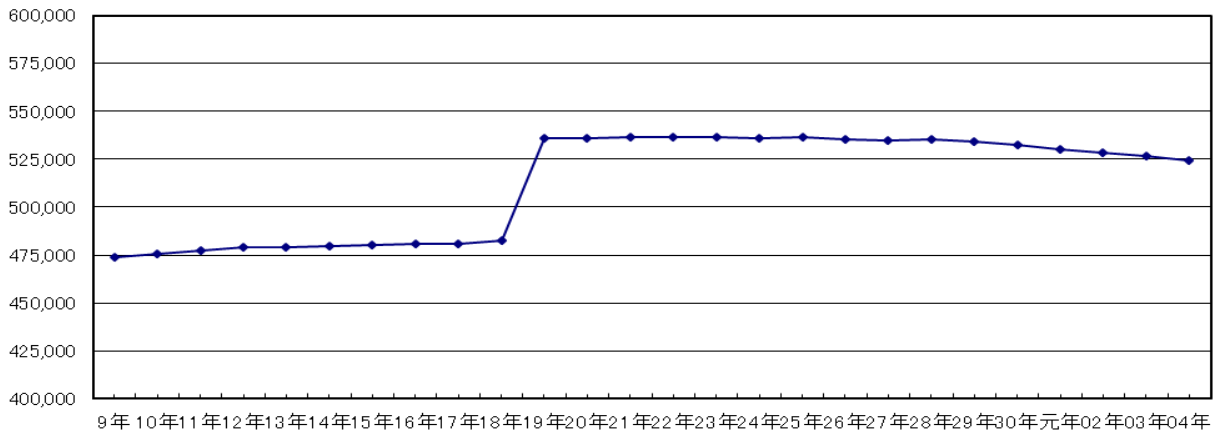
卸売業者各別取扱高

※ 兼業を含む

単位 上段：数量(kg) 下段：金額(円)

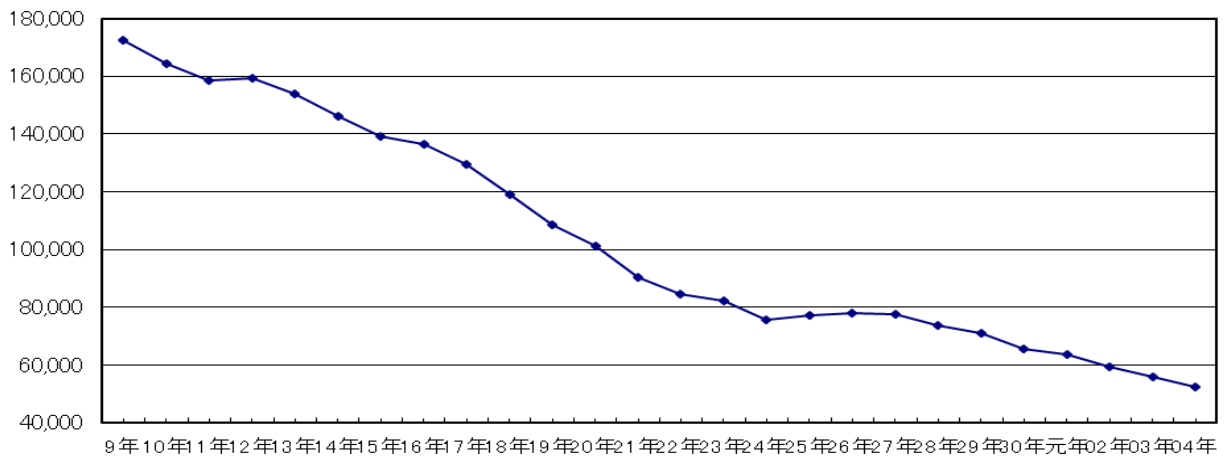
	合計	平均単価	1月	2月	3月	4月	5月	6月	7月	8月	9月	10月	11月	12月	
青果部計	30,204,056	¥275	2,511,987	2,457,941	2,649,669	2,444,708	2,223,192	2,226,285	2,031,808	2,152,687	2,433,133	2,801,222	2,985,977	3,285,447	
	8,313,110,308		692,177,923	723,096,187	819,167,320	760,620,228	639,813,977	620,332,667	564,145,077	679,566,852	678,940,296	644,671,058	618,226,915	872,351,808	
	野菜	23,787,886	¥222	1,980,577	1,941,088	2,161,290	2,000,561	1,881,895	1,747,270	1,593,763	1,666,742	2,000,334	2,263,308	2,264,961	2,286,098
		5,285,435,154		434,358,569	445,629,713	528,175,417	506,617,546	469,801,597	418,099,113	343,343,952	369,811,299	457,888,499	457,191,002	401,905,656	452,612,791
	果実	6,416,170	¥472	531,410	516,853	488,379	444,147	341,297	479,015	438,045	485,945	432,799	537,914	721,016	999,349
3,027,675,154		257,819,354		277,466,474	290,991,903	254,002,682	170,012,380	202,233,554	220,801,125	309,755,553	221,051,797	187,480,056	216,321,259	419,739,017	
水産物部計	22,053,399	¥719	1,460,962	1,455,886	2,272,349	1,759,720	1,806,600	2,047,527	1,584,143	1,377,968	1,534,126	1,491,853	1,883,167	3,379,098	
	15,857,793,934		979,958,281	918,324,812	1,407,499,638	1,087,227,765	1,056,018,658	1,430,431,208	1,165,906,389	1,020,853,908	1,114,817,786	1,339,273,158	1,650,655,871	2,686,826,460	
生鮮水産物	6,662,067	¥864	593,789	490,630	647,214	558,040	705,547	736,062	511,031	439,316	433,036	446,238	455,174	645,990	
	5,758,589,268		481,633,728	378,200,217	521,203,273	450,099,018	506,200,449	454,315,748	452,009,647	399,973,934	406,146,329	437,290,415	465,220,311	806,296,199	
	鮮魚	5,960,970	¥832	506,866	410,231	563,394	485,025	636,182	685,809	473,266	413,126	417,435	429,267	393,342	547,027
		4,957,682,586		396,554,224	302,271,520	444,099,786	378,895,210	440,074,564	397,247,179	367,300,482	356,068,736	379,551,684	410,879,105	397,521,871	687,218,225
	貝類	594,369	¥1,029	83,805	76,423	77,942	62,657	58,699	35,157	12,305	12,305	8,858	11,418	58,803	95,997
		611,682,207		80,946,113	71,157,908	68,982,250	58,109,869	52,676,886	34,785,708	16,541,170	18,880,349	15,292,650	18,657,583	62,926,020	112,725,701
	淡水魚	106,728	¥1,773	3,118	3,976	5,878	10,358	10,666	15,096	25,460	13,885	6,743	5,553	3,029	2,966
		189,224,475		4,133,391	4,770,789	8,121,237	13,093,939	13,448,999	22,282,861	68,167,995	25,024,849	11,301,995	7,753,727	4,772,420	6,352,273
冷凍水産物	6,105,088	¥678	228,562	276,444	584,876	425,264	390,671	287,944	288,639	275,944	458,572	367,666	660,504	1,860,002	
	4,139,598,783		199,964,158	233,235,419	356,955,885	250,696,717	219,045,720	214,438,190	238,126,737	247,456,620	297,228,972	367,593,855	392,272,123	1,122,584,387	
	冷凍魚	5,688,624	¥634	186,049	242,537	518,941	398,419	365,546	255,639	258,834	235,275	436,008	336,615	630,772	1,823,989
		3,603,784,935		128,512,193	194,003,231	264,635,802	218,887,267	187,559,356	177,426,451	205,088,379	199,846,552	268,949,193	331,206,956	352,082,517	1,075,587,038
	鯨肉	416,464	¥1,287	42,513	33,907	65,935	26,845	25,125	32,305	29,805	40,669	22,564	31,051	29,732	36,013
		535,813,848		71,451,965	39,232,188	92,320,083	31,809,450	31,486,364	37,011,739	33,038,358	47,610,068	28,279,779	36,386,899	40,189,606	46,997,349
加工水産物	9,286,244	¥642	638,611	688,812	1,040,259	776,416	710,382	1,023,521	784,473	662,708	642,518	677,949	767,489	873,106	
	5,959,605,883		298,360,395	306,889,176	529,340,480	386,432,030	330,772,489	761,677,270	475,770,005	373,423,354	411,442,485	534,388,888	793,163,437	757,945,874	
	塩干・加工物	8,548,309	¥694	583,277	628,918	962,524	696,813	649,487	958,968	722,671	603,317	589,518	618,651	709,958	824,207
		5,932,913,256		296,465,963	303,313,888	525,568,424	383,774,276	328,729,349	759,552,612	473,838,849	371,511,389	409,850,123	532,854,476	791,482,764	755,971,143
	藻類	737,935	¥36	55,334	59,894	77,735	79,603	60,895	64,553	61,802	59,391	53,000	59,298	57,531	48,899
		26,692,627		1,894,432	3,575,288	3,772,056	2,657,754	2,043,140	2,124,658	1,931,156	1,911,965	1,592,362	1,534,412	1,680,673	1,974,731
合計	52,257,455	¥463	3,972,949	3,913,827	4,922,018	4,204,428	4,029,792	4,273,812	3,615,951	3,530,655	3,967,259	4,293,075	4,869,144	6,664,545	
	24,170,904,242		1,672,136,204	1,641,420,999	2,226,666,958	1,847,847,993	1,695,832,635	2,050,763,875	1,730,051,466	1,700,420,760	1,793,758,082	1,983,944,216	2,268,882,786	3,559,178,268	

### 姫路市人口推移



### 卸売業者取扱数量推移

(t)



### 卸売業者取扱金額推移

(百万円)

